

USA
GYMNASTICS



Illinois

**Rules &
Policies
Book**

Produced by the Illinois USA Gymnastics
Rules & Policies Book Committee

2001 - 2002 Edition

Visit the Illinois web site for all the latest updates

Region5.com/illinois

Table of Contents

2001 - 02 ILLINOIS COMPETITIVE INFORMATION SUMMARY 0-1

Illinois Club Directory 1-1

State of Illinois 2-1

State Committee Members (formerly Called Board)	2-1
Educational Contributors	Error! Bookmark not defined.-Error! Bookmark not defined.
NAWGJ Board of Directors	2-1
Election Procedures Illinois USA Gymnastics Committee	2-2
Committee Meeting Dates	2-2
Illinois State Hotline	2-2
Illinois Newsletter (see web-site for most up to date information)	2-3
Partners in Gymnastics (Congress, Training Camps, Awards Banquet)	2-3
State Congress	2-4
State Training Camp	2-4
Recognition Dinner (Awards Banquet)	2-4
Illinois Scheduling Meeting	2-5
Request for Judges Illinois USA Gymnastics	2-6
State Series Meet Bid Form Illinois USA Gymnastics	2-7
Skill Evaluator	2-8
Safety Certification	2-8
Special Olympics	2-2
Petition for Gymnasts Outside the USAG System	2-2
Mandate Scores	2-2
NON USA Gymnastics Eligibility Petitions	2-3

Region 5 3-1

Regional Committee Members	3-1
Region 5 Technical Committee	3-1
Regional Training Camps	3-1
Procedures for Element Evaluations for Region 5	3-3
Region 5 U.S.A.G. Value Part Evaluation Form (J.O. and Elite)	3-4
Procedures for Injury / Illness Petitions for <u>REGIONAL</u> J.O. Competitions	3-5

Region 5 Injury Petition 3-6

Illinois Competition Information 4-1

Entry Requirements	4-1
Out of State Scores	4-1
2001-02 Illinois Competitive Information Summary	4-2
ILLINOIS ENTRY FORM – SECTIONAL & STATE MEETS	4-3
<u>Illinois</u> Injury Petition Procedure	4-4

Illinois Injury Petition 4-5

Illinois USA Gymnastics Meet Site Evaluation Form 4-5

Illinois USA Gymnastics Meet Site Evaluation Form 4-6

Illinois Meet Director Information 5-2

Meet Bid Form 5-2

Recommendations for Meet Directors 5-2

Meet Director's Reporting Procedure 5-2

Meet Director Symposium 5-2

Illinois State & Sectional Awards 5-3

Illinois USA Gymnastics State & Sectional Financial Report 5-2

Judges and Judging 6-1

Judge's Requests 6-1

Judging Panels 6-1

Procedure for Selection of Judges for Nationals, Regional, & State 6-2

Region 5 State web sites 7-1

Indiana Club Directory See Web Page www.Region5.com/indiana 7-1

Kentucky Club Directory See Web Page www.clubs.org/WKY 7-1

Michigan Club Directory See Web Page www.clubs.org/WMI 7-1

Ohio Club Directory See Web page www.region5.com/ohio 7-1

States near Illinois web sites 7-1

Wisconsin See Web site www.clubs.usag.org/WWI 7-1

Iowa See Web site www.clubs.usag.org/WIA 7-1

Missouri See Web site www.clubs.usag.org/WMO 7-1

Illinois Meet Calendar: 2001-2002 7-2

September 2001 7-2

October 20 7-3

November 2001 7-4

December 2001 7-5

January 2002 7-6

February 2002 7-7

March 2002 7-9

April 2002 7-10

May 2002 7-11

A General Guide to Competition (Parents) 8-12

Table of Contents 8-2

So you made the Team 8-3

Meet Etiquette for Gymnasts and Family Members 8-3

Gymnastics Scoring Guide for Spectators 8-4

How does the Illinois State Committee (Board) Arrive @ State Series Schedule 8-5

Other Useful Information 8-5

Code of Ethics and Rights & Obligations of Gymnasts 8-5

Junior Olympic Competitive Program 8-7

Mobility Between Levels 8-7

Competitions: 8-7

Awards 8-8

A Final Note: 8-9

2001 - 02 ILLINOIS COMPETITIVE INFORMATION SUMMARY

LEVEL	QUALIFYING SCORE	LAST DAY TO QUALIFY	SECTIONAL MEET	STATE MEET	ENTRY FEE
Level 4 INVITE	No qualifying score	February 17, 2002		March 2 & 3 - American Academy	\$50.00 <i>After</i> 2/19 - \$30.00 <u>On or before</u> February 19, 2002
Level 5 SECTIONAL	30.00 AA	February 10, 2002	February 23 & 24 - NW Amer. Institute NE Oaklawn PD SO Quincy Gymn.		\$50.00 <i>After</i> 2/12 - \$30.00 <u>On or before</u> February 12, 2002
Level 5 STATE	33.00 AA	February 23 & 24		March 9 & 10 - Gymnasti	\$55.00 <i>After</i> 3/12 - \$35.00 <u>On or before</u> March 12, 2002
Level 6 STATE	33.00 AA <i>ONCE</i>	February 17, 2002		March 2 & 3 - American Academy	\$55.00 <i>After</i> 2/19 - \$35.00 <u>On or before</u> February 19, 2002
Level 7 STATE	34.50 AA	March 10, 2002		March 23 & 24 - Energym	\$75.00 <i>After</i> 3/12 - \$55.00 <u>On or before</u> March 12, 2002
Level 8 STATE	33.00 AA	March 3, 2002		March 16 & 17 - Naperville Gym Club	\$75.00 <i>After</i> 3/5 - \$55.00 <u>On or before</u> March 5, 2002
Level 9 STATE	32.00 AA	March 3, 2002		March 16 & 17 - Naperville Gym Club	\$75.00 <i>After</i> 3/5 - \$55.00 <u>On or before</u> March 5, 2002
Level 10 STATE	32.00 AA	March 10, 2002		March 23 & 24 - Energym	\$75.00 <i>After</i> 3/12 - \$55.00 <u>On on before</u> March 12, 2002
Level 8 REGIONAL	34.50 AA	March 17, 2002		May 10 - 12, 2002 – Gymnastics World OH	\$60.00 Due at the State Meet - <i>bring a check.</i>
Level 9 REGIONAL	34.00 AA	March 17, 2002		April 6-7, 2002	\$65.00 Due at the State Meet - <i>bring a check.</i>
Level 10 REGIONAL	34.00 AA	March 24, 2002		April 13 & 14, 2002 Twistars Lansing MI	\$75.00 Due at the State Meet - <i>bring a check.</i>
Level 9 NATIONAL	By Percentage	April 7, 2002		April 27 & 28, 2002 Check National Info	Paid at Regional Meet
Level 10 NATIONAL	By Percentage	April 14, 2002		May 3 - 5, 2002 – Check National Info	Paid at Regional Meet

Illinois Club Directory

We will be sending an update as soon as we receive one from the National Office in your newsletter. Please replace this when you get

Clubs with USAG Registered Gymnasts as of August 1, 2001

The information here comes direct from the National Office. Please call USAG Membership Services (1-800-345-4719) for any additions, deletions or updates. Click on the team name to load a Yahoo map showing the location of the gym (This is only a function that can be performed online, if you are using your CD or hard copy you will not be able to upload a map). Although most of them are accurate, their accuracy cannot be guaranteed.

SEC	CLUB#	CLUB NAME	ADDRESS	CITY	ZIP	PHONE	FAX	EMAIL ADDRESS
NE	27191	"A.R.G.O."	749 Elm Street	Flossmoor	60422	708/206-0101	708/754-8159	
NE	24114	Allstar Gymnastics	1560 North Milwaukee	Vernon Hills	60061	847/367-7968		maryanncashman@mac.com
NE	25286	American Academy of Gymnastics	280 Palatine Road	Wheeling	60090	847/459-8883	847/459-3658	wiz0faag@juno.com
NE	24183	Bedford Park District	6700 South 78th Avenue	Bedford Park	60501	708/458-3534	708/458-1898	
NE	23093	Beverly Gymnastics Center	3660 West 111th Street	Chicago	60655	773/881-7775		
NE	27610	Bolingbrook Gymnastics Academy	422 Manor Hill	Lombard	60418	630/268-8825	630/739-5266	jody@tumblingtimes.com
NE	25899	Buffalo Grove Gymn Center	1362 Barclay Blvd	Buffalo Grove	60089	847/459-8842	847/459-8959	
NE	25668	Chicago Park Dist	541 N. Fairbanks	Chicago	60611	312/742-4929	312/747-2026	cindy.morano@chicagoparkdistrict.com
NE	26938	Dreams Gymnastics Club, Inc.	3070 North Lake Terrace	Glenview	60025	847/657-8785	847/657-3839	Patrice@fsinet.net
NE	26372	Flying High Gymnastics	5422 Dansher Road	Countryside	60525	708/352-3099	708/698-1000	
NE	24667	Gainers Gymnastics	3301 Butler Ave	South Chicago Hts	60411	708/755-2261	708/755-9695	
NE	26853	Golden's Gymnastics Center, Inc.	1105 Lesco Road	Kankakee	60901	815/936-1304	815/936-1442	ggcgym@worldnet.att.net
NE	25012	Gym Kinetics Gymnastics	19220 Ridge Rd.	Mokena	60448	708/479-6969	708/479-5975	ANDROMEDAGAL@aol.com
NE	26340	Gymnast Central	10350 Rising Ct.	Woodridge	60517	630/783-1362		
NE	24457	Hinsdale Gymnastics Club	55th And Grant Streets	Hinsdale	60521	630/887-1340	630/887-9638	nkrupick@district.86.k12.il.us
NE	27437	Illinois Gymnastics Club	302 Market Street	Mount Carmel	62863	618/262-8017	618/263-3375	
NE	24468	Illinois Gymnastics Institute, Inc.	150 S Church Street #E	Addison	60101	630/543-7575	630/543-7979	toddigi@aol.com
NE	26744	Lake Shore Academy	937 West Chestnut	Chicago	60622	312/563-9400	312/563-0884	
NE	26073	Mt. Prospect Gymnastic Team	Mt Prospect Park District	Mt Prospect	60056	847/640-1000	847/364-2824	
NE	23915	North Shore Gymnastics	27825 Irma Lee Circle	Lake Forest	60045	847/367-6555	847/367-6556	lbaker2914@aol.com
NE	23037	Northbrook Gymnastics	1845 Raymond Drive	Northbrook	60062	847/564-3420	847/564-4139	

NE	23450	Oak Lawn Pirouette's Gymnastic	9400 South Kenton	Oak Lawn	60453	708/857-2215	708/598-5179	
NE	25297	Oak Park Gymnastics Center	218 Madison	Oak Park	60302	708/383-0218	708/383-5702	krchope@home.com
NE	24022	Olympia Gymnastics Center	20300 Governors Highway	Olympia Fields	60461	708/748-9660	708/748-7662	rhelmke@prodigy.net
NE	23610	Rhythmic Gems	1215 Church Street	Evanston	60201	847/864-8445		
NE	24403	Skyline Gymnastics	4430 N Western Avenue	Chicago	60625	773/478-7174	773/478-8457	skygym773@aol.com
NE	26047	Tri Star Gymnastics, Inc.	7751 W. Van Buren	Forest Park	60130	708/771-7827	708/771-7008	lallen2285@aol.com
NE	24408	Tumbling On U.S.A.	10482 W 163rd Place	Orland Park	60467	708/403-3861	708/403-3872	TumblingOnUSA@aol.com
NE	24582	Ultimate Gymnastics Center	PO Box 1192	Carbondale	62903	618/687-2133	618/351-6296	
NE	25773	Ultimate Gymnastics of Gurnee LLC	1018 Tri-State Parkway	Gurnee	60031	847/856-8573	847/856-8596	RANNBN@aol.com
NE	24636	Wilmette Gymnastics	3000 Glenview Rd	Wilmette	60091	847/256-9695		
NW	24334	Aerial Gymnastics Club	1516 Brook Dr.	Downers Grove	60515	630/495-0150	630/495-8710	
NW	27396	Airborne Gymnastics	752 W Riverside Blvd	Rockford	61103	815/282-8496	815/282-3040	
NW	44980	American Eagles Gymnastics	1880 Circuit Dr.	Round Lake Beach	60073	847/201-1567	847/201-1564	
NW	23971	American Institute of Gymnastics	881 Shoreline Drive	Aurora	60504	630/851-5437	630/851-2588	
NW	25347	Aurora Turners Gymnastics	60 North La Salle	Aurora	60505	708/892-3616		
NW	27217	Bartlett Gymnastics Center	1675 S Rt 59	Bartlett	60103	630/837-9699	630/837-9788	
NW	26520	Buehler YMCA	1400 W. Northwest Hwy	Palatine	60067	847/359-2400	847/359-5098	buehlerymca@netscape.net
NW	23958	Causa's Gymnastics Club	103 Wright Street	Lasalle	61301	815/224-3047		
NW	25965	Chertkov's World of Gymnastics	9162 Trinity Drive	Lake In The Hills	60102	847/854-8518	847/854-8628	
NW	23300	Crystal Lake Gymnastic Training Center	387 E Congress Parkway	Crystal Lake	60014	815/477-4111		
NW	25825	Elite Sports Complex, Inc.	6360 S. Belmont	Downers Grove	60516	630/968-2699	630/960-5580	
NW	24284	Elk Grove Gymnastics School	775 Bonnie Lane	Elk Grove Village	60007	847/437-3447	847/437-3447	nelg999@aol.com
NW	23233	Energym Sports Campus	1715 DeKalb Ave.	Sycamore	60178	815/899-6424	815/899-6429	EnergymSports@aol.com
NW	26884	Excel Gymnastics Academy	2301 Main Street	Batavia	60510	630/482-3738	630/482-3746	
NW	26879	Fox Valley Park District	555 S Eola Road	Aurora	60504	630/851-8990	630/851-8572	
NW	23536	Grayslake Gymnastics Factory	888 E Belvidere Rd, Suite 202	Grayslake	60030	847/223-1555	847/223-2385	gymfacts@juno.com
NW	26877	Gym Nasti	517 E Geneva Road	Carol Stream	60188	630/681-8400	630/681-8440	-GymNasti1@Prodigy.net
NW	26003	Gymkhana Gymnastics Club	1700 Tower Drive	Hanover Park	60133	630/483-0330	630/483-0797	gymkhana1@aol.com
NW	23509	Gymnastic Academy of Rockford	6630 Spring Brook Road	Rockford	61114	815/654-3867	815/654-8785	onefungym@aol.com
NW	24423	Gymnastics Spot	200 South Shaddle Avenue	Mundelein	60060	847/949-7768	847/949-6241	Gymnsport@aol.com
NW	82946	Huntley Unlimited Gymnastics School	10991 Ruth Road	Huntley	60142	847/659-1675	847/659-1676	
NW	26618	Itasca Gymnastics Center	350 E. Irving Park Road	Itasca	60143	630/773-2257	630/773-4524	
NW	23054	Midwest Academy of Gymnastics	30 W 315 Calumet Ave.	Warrenville	60555	630/393-6693	630/393-6695	wmcgrath@ix.netcom.com
NW	26059	Naperville Gymnastics Club	1743 W. Quiney Suite 111	Naperville	60540	630/416-7114	630/416-7164	napergym@aol.com
NW	24786	Northwest Turners	6625 West Belmont Ave.	Chicago	60634	773/637-6648	773/637-0291	
NW	23486	Oswego Park District Gym Club	137 Hickory Street	Oswego	60543	630/892-3000	630/892-0264	OPD Gymnastics @AOL.Com

NW	23846	Palatine Gym Club	250 E. Wood Street	Palatine	60067	847/705-5123	847/991-2127	
NW	24321	Palmer's Gymnastics, Inc.	4N 240 Cavalry Drive #C	Bloomington	60108	630/351-8330	630/351-7008	Palmergym@webtv.net
NW	27748	Phenom Gymnastics	2929 Stonewater Drive	Naperville	60564	630/922-9492	708/479-7212	
NW	25669	Premier Gymnastics Academy	2435 Curtiss Street	Downers Grove	60515	630/969-0900	630/969-0967	marjendiab@aol.com
NW	27209	Progressive Movements	2506 Hiller Ridge Rd	Johnsburg	60050	815/759-1400	815/759-9056	info@pmgta.com
NW	27487	Rockford YMCA Pink Panthers	200 Y Blvd.	Rockford	61107	815/489-1264	815/987-3767	
NW	81922	Spring Hill Gymnastics, Inc.	1016 N. McLean Blvd.	Elgin	60123	847/488-9467	847/488-9467	MaryJoeGymnastics@msn.com
NW	23401	St. Charles Gymnastics Club	720 N. 17th St. Unity 17	St Charles	60174	630/584-5544	630/584-6650	
NW	27237	The Gym. Academy Of Champions	13 Prosper Ct. Unit B	Lake in the Hills	60156	847/658-3207	847/658-9609	TGAC Gymnastics@aol.com
NW	24883	U.S. Gymnastic Training Center	405 Enterprise Pkwy	Lake Zurich	60047	847/540-9917	847/540-9917	
S	17909	Dynamite Gymnastics, Inc.	1630 E. Huston Dr.	Decatur	62526	217/875-1400	217/875-1411	dynamitegym1@aol.com
S	24460	Central Gymnastics Academy	406 S Crescent PO Box 265	Gilman	60938	815/265-7366	815/265-7822	kgym@fbcc.net
S	24351	Central Illinois Gymnastics Academy	725 W Detweiler	Peoria	61615	309/691-9602	309/693-8119	cigai@aol.com
S	24586	Champaign County YMCA	707 N. Country Fair Dr.	Champaign	61821	217/359-9622	217/355-0059	tjgr@unity.k12.il.us
S	26328	Effingham Academy of Gymnastics	PO Box 176	Effingham	62401	217/342-9544	217/342-9544*51	eag@ineffingham.com
S	24399	Gym Corner	208 Muller Road	Washington	61571	309/444-3209		
S	23906	Gymnastics Etc.	402 Olympia	Bloomington	61704	309/663-8413	309/663-8350	tmillmore@aol.com
S	27340	GymStar Gymnastics	318 N Liberty St	Morris	60450	815/941-7777		
S	81792	L & M Gymnastics	P.O. Box 3141	Springfield	62708	217/753-2613		landmgym@juno.com
S	54778	Lifelines Gymnastics Center	25 E. Springfield	Champaign	61821	217/351-0888	217/356-7578	omlet57@yahoo.com
S	24101	Mattoon Academy Of Gymnastics	Box 1021	Mattoon	61938	217/235-1080	217/752-6858	
S	23218	Mid Illinois Gymnastics And Dance, Inc.	1421 State Street	Alton	62002	618/466-7878	618/465-2746	LLMoehn@aol.com
S	24161	Midstate Gymnastics Academy	111 S. Old Covered Bridge Lane	Springfield	62707	217/787-7004		
S	26685	Midwest Twisters	214 Aquarius Drive	O'Fallon	62269	618/632-6448		
S	27629	Quad City Gymnastics Academy	13120- RT. 67	Milan	61264	309/787-0205		QCGA@WORLDNET.ATT.NET
S	23833	Quincy Gymnastics Center	2010 Jennifer Lane	Quincy	62301	217/224-8491	217/221-9615	parrish@met.com
S	27310	Rising Stars Academy	2902 Gill St.	Bloomington	61704	815/844-4049	815/844-5388	rsacoach1@aol.com
S	27298	Snow Power Gymnastics, Inc.	1707 South Park Avenue	Herrin	62948	618/942-7697	618/942-2405	
S	25023	Southern Illinois Gymnastics Academy	3304 W Commercial	Marion	62959	618/997-3505	618/997-3505	sigafun@cs.com
S	23721	Springfield YMCA Gymnastics Team	701 South 4th Street	Springfield	62705	217/544-9846	217/544-0004	
S	24378	Summit Gymnastics Academy	3100 29th Street	Moline	61265	309/762-2789		info@summitgymnastics.com
S	24653	Talents Unlimited Gymnastics Center	609 Munsell	Paris	61944	217/465-6052		janelle@1choice.net
S	23608	The Clubs at River City	8603 N. University Street	Peoria	61615	309/693-5715	309/693-5705	
S	27306	Victory Academy	401 Bronco Dr	Bloomington	61704	309/662-4927		
S	23197	World Class Gymnastics Center	5700 Old Collinsville Road	Fairview Heights	62208	618/632-4555	618/632-4597	

State of Illinois

State Committee Members (formerly Called Board)

Elected (Voting) Positions

STATE CHAIRMAN

Norbert Bendixen
200 S. Shaddle Avenue
Mundelein, IL 60060
(847) 949-USGF (8743)
FAX (847) 949-6241
NorbertIL@AOL.com

Term Expires 6/02

ELITE CHAIRMAN

Todd Gardiner
145 Plaza Drive
Westmont, IL 60559
(630) 325-3333
fax (630) 325-1992
ToddIGI@AOL.com

Term Expires 6/02

LEVEL 8 CHAIRMAN

Mary Joe Roehrig
694 Deer Ln.
Sleepy Hollow, IL 60118
(847) 428-0962
FAX (847) 428-0923
EMail MaryJoeGymnastics@msn.com

Term Expires 6/02

LEVEL 5 CHAIRMAN

Jay Murphy
752 W. Riverside Blvd.
Rockford, IL 61103
(815) 282-8496
(815) 282-3040 (fax)
Email: AirborneGymnastics@Juno.com
Term Expires 6/03

J.O. CHAIRMAN

Ron Nasti
517 E. Geneva
Carol Stream, IL 60188
(630) 681-8400
Fax (630) 681-8440
Email gymnasti@prodigy.net

Term Expires 6/03

LEVEL 10 CHAIRMAN

Dianne Durham
4430 N. Western Ave.
Chicago, IL 60625
(773) 478-7174
Fax (773) 478-0161
Email DianneDurham@cs.com

Term Expires 6/02

LEVEL 7 CHAIRMAN

Cyndi Zimmerman
1167 Milburn CT
Naperville IL 60540
Phone: (630) 355-1779
Fax: (630) 778-1370
Email gymmom4@aol.com

Term expires 6/03

SECRETARY

Teresa Millmore
402 Olympia
Bloomington, IL 61704
(309) 663-8413 Gym
(309) 663-8350 Fax
Tmillmore@AOL.com

Term Expires 6/02

LEVEL 9 CHAIRMAN

Suzie Kinsman
218 Madison
Oak Park, IL 60302
(708) 383-0218
FAX (708) 383-5702
Email krchope@home.com

Term Expires 6/03

LEVEL 6 CHAIRMAN

Wendy McGrath
30W315 Calumet Ave.
Warrenville, IL 60555
(630) 393-6693
Fax (630) 393-6695
wmcgrath@ix.netcom.com

Term Expires 6/02

SAFETY CHAIRMAN

Don McPherson
1516 Brook Drive
Downers Grove, IL 60515
(630) 495-0150
FAX (630) 495-8710
DonaldMc@msn.com

Term Expires 6/03

Advisory (Non-Voting) Positions

NAWGJ

Jean Johnson
5501 Wolf
La Grange, IL 60525
(708) 246-1643 NAWGJ & Fax
Email ILSJD@aol.com

ELECTION

COMMISSIONER

Terry Theobald
1186 Oakwood Ave
Des Plaines, IL 60016
(847) 699-1187 (Home), & Fax
(Call 1st)
EMail.ttheobald@aol.com

EDUCATION CHAIRMAN

Leonard Isaacs
280 Palatine Road
Wheeling, IL 60090
(847) 459-8883
Fax (847) 459-3658
Email wizofaag@juno.com

Educational Contributors:

SKILL EVALUATOR EXAM ADMINISTRATORS

Tony Whitaker (630) 458-9211
Randy Peebles (217) 787-7004
Norbert Bendixen (847) 949-USGF

SAFETY INSTRUCTORS

Bob Ito (773) 566-6695
Edgar Pulido (630) 971-8468

NAWGJ Board of Directors

STATE JUDGING DIRECTOR

Jean Johnson
5501 Wolf
La Grange, IL 60525
(708) 246 – 1643 NAWGJ & Fax
Email IL.SJD@aol.com

JUDGES EDUCATION

Kathie Gephardt
1313 Lawn Ct.
McHenry, IL 60050
(815) 344-7823
Email gymjudge59@ol.com

NORTH JUDGE ASSIGNOR

Sue McNamara Brosnan
4556 N. Mobile
Chicago IL 60630
(773) 202-8146
Email judge25@juno.com

NORTH JUDGE'S CUP DIRECTOR

Betty Axelson-McClelland
20 Covered Bridge Rd.
S. Barrington IL 60010
(847) 382-7487

JUDGE'S NEWSLETTER EDITORS

Deb Tritt
441 Stagecoach Ct.
Glen Ellyn IL 60137
(630)-858-9236 fax(630) 858-9237
Email Debtritt@aol.com

ETHICS CHAIRPERSONS

Samme Cuthbertson
4N 248 Central Ave.
Bensenville IL60106
(630) 941-0055

SECRETARY/TREASURE ACTIVE STATUS

Cindi Zimmerman
1167 Milburn CT.
Naperville IL 60540
Phone: (630) 355-1779
Fax (630) 778-1370
Email gymmom4@aol.com

SOUTH JUDGE ASSIGNOR

Mary Kraus
6600 South 6th St. Road #210
Springfield IL 62707
(217)-585-1223
Email suark888@aol.com

SOUTH JUDGE'S CUP DIRECTOR

Cathy Peebles
111 S. Old Covered Bridge Rd.
Springfield, IL 62707
(217) 787-7004
Fax (217) 787-7020

PROFESSIONAL BENEFITS

Sandy Oldham
1230 South Wellington Ct
Buffalo Grove, IL 60089
(847) 634-1323
Email Dewoldh@aol.com

Election Procedures Illinois USA Gymnastics Committee

The election of the USAG Illinois State Committee members is done on a staggered year system in May of every year. Each elected member:

- a. Serves for a two-year term
- b. Has 1 vote
- c. Must be nominated (must first give permission to be nominated)

The election of the Committee will follow the format below:

Even Years	Odd Years
2002, 2004, 2006	2003, 2005, 2007
State Chairman	Junior Olympic Chairman
Level 10 Chairman	Level 9 Chairmen
Level 8 Chairman	Level 7 Chairmen
Level 6 Chairman	Level 5 Chairmen
Secretary	Safety
Elite	

Nomination requests will be sent to all professional members from the March mailing labels. Any nomination not filled out completely will be disqualified. Please make sure that **EVERY** piece of information is filled out so that your nomination will be valid.

Election ballots will be sent to all professional members from the May mailing labels. The only person who sees the ballots is the Election Commissioner. Official ballots are randomly numbered insuring confidentiality.

If only one person is nominated for a particular position, the State Chair will cast the deciding vote on the person nominated.

Appointed board positions are **non-voting**. They serve the board in an **advisory** capacity. They are 1 year positions are to be re-appointed on a yearly basis.

Committee Meeting Dates

The Illinois State Committee will meet at all state meets, @ Annual Scheduling Meeting and required @ Regional Congress. Please refer to the state calendar for more details and times.

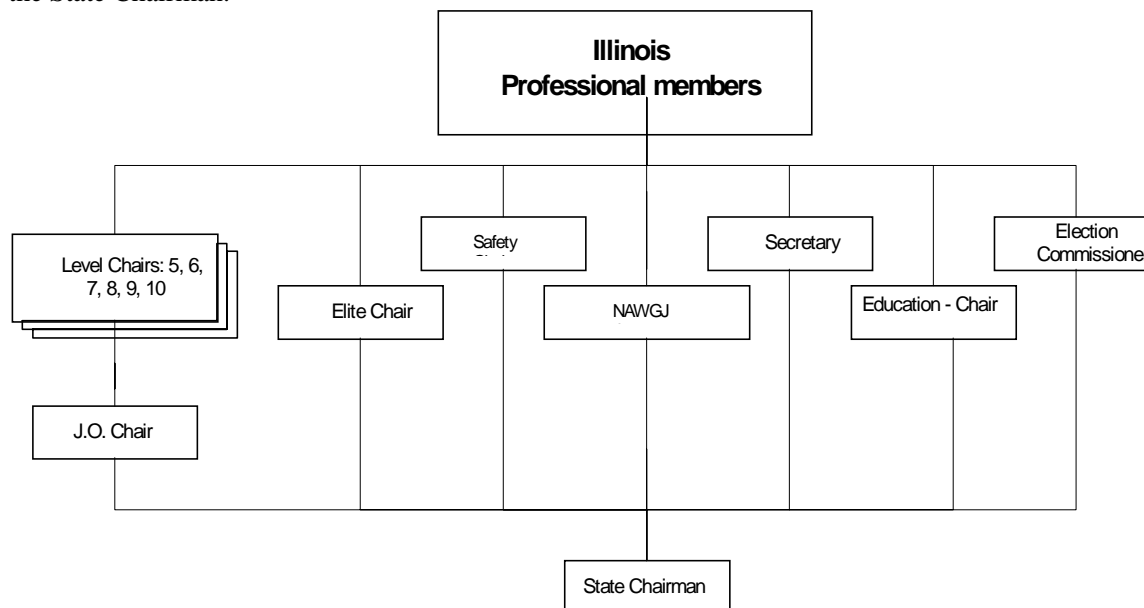
State Committee meetings are open unless otherwise stated. Please get involved.

We **NEED YOUR INPUT**.

Illinois State Hotline

Members are encouraged to contact the appropriate Committee members to discuss any questions, concerns, or problems that arise. Professional members are strongly advised against contacting Regional or National Officers with matters that can be resolved within the state. Please refer to the "flow chart" below for the communication tree.

Professional members may contact the appropriate Level Chairperson, Safety Chairman, Elite Chairman, NAWGJ Chairman, Education Chairman, or Secretary. If the Level Chairman cannot answer your questions, he or she will contact either the JO Chairman or State Chairman. If the other chairmen cannot assist you, they will in turn contact the State Chairman.



Illinois Newsletter (see web-site for most up to date information)

The Illinois Newsletter is produced **for your information**. It contains very important information & is the only way we (the state Committee) can communicate with you (the professional members). Please Read & File these newsletters in the back of your Illinois Rules & Policies so that they can be referred to easily.

The newsletter is a **every other Month** publication, however if there is pertinent news, we will put out additional issues as needed.

Teresa Millmore is our Newsletter Editor. We encourage contributions to the Newsletter.

The deadline for information is the 7th day of each month

Please send your ideas to Teresa Millmore or fax them to 309-663-8350.

We do not accept coaching classified Ads or requests in this publication because we feel that we would be drawing from each other (a conflict of interest).

Partners in Gymnastics (Congress, Training Camps, Awards Banquet)

Each year the Women's, Men's, Tumbling & Tramp, and Rhythmic Programs get together for a weekend in the summer. During this time we will host the following activities as part of the Partners in Gymnastics. This unique collaboration combines all the Disciplines that are offered by USA GYMNASTICS

State Congress

At the State Congress we offer:

- PDP I testing
- Skill Evaluator Testing
- Level 1-4 Coaches Accreditation
- CPR and First Aid
- 2 Safety Courses
- Pre-School Accreditation
 - KAT
 - MELPD

Specific education for the following disciplines

- Pre-School
- Recreation
- Pre-competitive
- Beginning competitive
- Round table Discussion on various Topic

State Training Camp

Illinois USA Gymnastics Camps and Clinics Purpose

Included in the Partners in Gymnastics we will host at present

- Level 4-6 Training Camp
- Level 7 –8 Training Camp

Mission Statement of the training Camps: Using our own Illinois resources and coaches to provide an inexpensive training environment for our Illinois gymnasts using all the latest Training Techniques.

Gyms are encouraged to bring as many gymnasts as they wish,

TOPS TESTING: Yearly State Testing will take place. Please keep your eye on the Newsletters for the Regional TOPS Chairman's report for future information.

Recognition Dinner (Awards Banquet)

Each year we will host an Awards Banquets to Honor the athletes from our state on their accomplishments that year. This dinner will be held with the other disciplines of our spot, Men's, Tumbling and Tramp, Rhythmic, if they wish to join us.

Those invited "**As our Guests**" are the following:

- ☆ All Illinois Elite Athletes
- ☆ All JO National Qualifiers
- ☆ All Eastern Level 9 Qualifiers
- ☆ All TOPS National Athletes
- ☆ 1 Coach of Athletes being Honored

Those also invited to attend

- ☆ All State and Regional All-Around Champions. There will be a small awards Ceremony for them.
 - ☆ Parents of all Athletes
 - ☆ Remaining Coaches of Athletes
 - ☆ All Illinois Professional Members attending the Congress
-

Illinois Scheduling Meeting

All clubs wishing to host competitions must submit a list of meets at the scheduling meeting.

We will be holding our **Annual Meet Scheduling Meeting** during the State Congress weekend, or another scheduled weekend during the summer.

Please submit to the State Office via Fax or mail (postmark to be published in the Illinois Newsletter) a list of all meets that your club wishes to host.

- ◆ **The meets must be prioritized #1 , #2, #3, etc. These must be in the order of importance for your club.**
- ◆ **Each meet must include the Date, Level(s), Number of Sessions, and Number of Judges requested**

Phase 1

Meets requests need to be sent to the State Chairman. He/she (and the NAWGJ Chairman) will develop a Tentative Schedule listing everybody's 1st, 2nd, etc. requests (wishes). This will be produced in calendar form and handed out at the Scheduling Meeting.

Phase 2

At the Scheduling Meeting we will proceed through the meets submitted in **Phase 1** placed on the tentative schedule targeting key weekends and weekends that are over-booked. During a particular weekend those with a **priority #1** will receive the bid. We will proceed with priority #2, etc.

We will only schedule enough meets that will book 80% of the available judges.

Those clubs that do not submit a Meet schedule prior to the meeting **will not be able to participate** at the scheduling Meeting **until Phase 2 of the Scheduling Procedure has been completed.**

Phase 3

We will go through the Calendar again and fill any holes that might have been missed by those that did not participate in Phase 2.

Phase 4

All Meets that were placed on the Official Calendar must then **request judges** (the form is included in IL R&P) Judging requests must include a check.

This form is due exactly 2 weeks (postmarked) following the Meet Scheduling Meeting.

All meets that have not been requested and paid for by the end of Phase 3 will be dropped from the "Official Calendar."

Why all this?

The last few years the Assignor had great difficulty with assigning meets that came in after the Scheduling Meeting. Therefore, **the meets on the Official Calendar will be assigned judges first.** Then all other meets thereafter may receive judges. We are not excluding meets that Meet Directors may add to the Schedule at a later date, but simply assuring that judges are available to those that followed the Procedure above.

Thank you for your patience and understanding.

Norbert and the Illinois State Committee

Request for Judges Illinois USA Gymnastics

This form is due exactly 2 weeks (postmarked) following the Meet Scheduling Meeting
After the Initial Scheduling Meeting, requests should be sent to:

North Assignor

Sue Brosnan
4556 N. Mobile
Chicago IL 60630
773 – 202-8146

South Assignor

Mary Kraus
6600 So. 6th St. Rd. #210
Springfield IL 62707
217-585-1223

2001-02
All Forms must be computer filled out or Type written

All Assigning Fees Must Accompany this Form Assigning Fees \$3.00 Per Judges per Day Requested
Check payable NAWGJ-IL

USA Gymnastics Sanctioned Meet: _____ Date: _____

Yes _____ No _____

Hosting Club _____ Phone _____

Name of Meet: _____ Dates _____

Location (address) _____

Report Time for Judges _____ Start time of Sessions _____

Level of Meet: _____ Number of Judges requested _____

Need 2 full sessions to request 8 Judges

No. of Days _____ Session / Day : _____ Approx. No. of Gymnasts _____

Estimated Length of Sessions: _____ Finals: Yes _____ No _____

Meet Director: _____ Pro-Number _____

If Contracts are to be sent to different address
please fill out below.

Address: _____ Address: _____

Phone: WK _____ H _____

I have read and understand that the terms and conditions of the Judges employment are governed by the competition agreement, which has been approved by USA Gymnastics as part of their sanctioning procedure.

All Judges and assigning officials must be notified 7 days prior to the meet if there are changes in this contract. A minimum of 7 days notice is required for cancellations of officials. Failure to comply will result in payment by the meet director of one session per Judge and non-refundable expenses incurred.

Signature of Meet Director: _____ Date: _____

Reminder this form must also be filled out for State Series Meets

State Series Meet Bid Form Illinois USA Gymnastics

(Reminder did you Send In Your Request for Judge Form) Meet Date(s) _____

Name of Competition: _____ Level _____

Name of Host Organization: _____

Meet Director _____ USAG # _____

Meet Director MUST be certified to obtain a sanction

Address _____

Phone (Gym) _____ (Home) _____

Number of meets you hosted in the last 2 years: Local _____ Sectional _____ State _____ Regional _____

Number of meets you attended in the past 2 years: State _____ Regional _____ National _____

Facility Name _____

Address _____

Size of Competition Area _____ Spectator Capacity _____ Type _____

Separate Warm-up Area YES _____ NO _____ Size _____ Distance from Competitive Gym _____

Facility Rental Fee _____ Equipment Rental Fee _____ Custodial Fee _____ Air-conditioned _____

(\$15 Maximum in house)

(out of house only)

Dressing Room for Gymnasts Yes _____ No _____ number of Restroom Women _____ Men _____

Describe Parking Facilities _____

Separate Meeting Room for Judges Yes _____ No _____ VCR & Monitor Available Yes _____ No _____

Type of Meet Format You Plan to USE: _____ **Traditional** _____ **Capital Cup (Warm-up Compete, Warm-up Compete)** Reminder all Equipment must be identical including length of vault runway

Number & Type of Equipment to be used: **(The Illinois USAG Committee STRONGLY recommends that equipment specifications equal that of the JO Level 10 requirements)**

Vault _____ Bars _____ Bar Spread _____ Type Rail _____

Beam _____ Floor _____ Boards _____

Length of Vaulting Area(including runway, horse, mat area) _____ Clearance Distance: End of Vault Mat to wall _____

On both sides (front & back)of Bars _____ Ends of Beams _____ Around Floor _____

Admission: Adults _____ Children _____ **State Requirements: In House \$3 Adults \$2 children Out of House \$4 Adults 2 Children** All Gymnasts with USAG CARDS FREE

Please Describe T-Shirt Vendor _____

What Type of Emergency Medical Personnel and Supplies will be available at the meet site? _____

This is required at State Series Meets

Nearest Airport _____ Distance from Site _____

Hotel Accommodations _____ Cost _____ Distance from site _____

I certify that the above information is accurate. I agree to follow the guidelines as listed in the USA Gymnastics Women's Rules and Policies & Illinois Rules & Policies in the conduct of this meet.

2001-02 All Forms must be computer filled out or Type written

Date _____ Signature of Meet

Director _____

Send to Norbert Bendixen, 200 S. Shaddle Ave., Mundelein IL 60060, Fax 847-949-6241 or email NorbertIL@AOL.com

Skill Evaluator

Norbert Bendixen (847) 949-USGF
Randy Peebles (217) 787-7004

Tony Whitaker (630) 960-9920

- ✓ This exam will be administered during the State Congress.
- ✓ For special arrangements, please contact the Skill Evaluator Administrators nearest you from those listed above for additional testing. Additional Exams can be scheduled.

Safety Certification

All Pro-Members, Meet Directors, Instructor Members (that will be out on the Competitive Floor) must be Safety Certified.

All Safety Certification assignments come from the national office.

Safety Instructors in Illinois: Bob Ito; Edgar Pulido (630) 971-8468

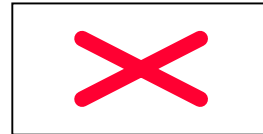
The Safety Schedule is updated weekly on the website www.usa-gymnastics.org

- ✓ LATE REGISTRATIONS ARE NOT GUARANTEED A BOOK OR ADMISSION TO THE COURSE
 - ✓ Monday (by 5:00pm Eastern Standard Time) is the last day registration will be accepted for the courses being conducted the following weekend. Registrations received after that time or on site will be charged an additional \$25
 - ✓ Minimum age for Safety Certification is 16 years.
 - ✓ Registrations maybe faxed to the office @ 317-237-5069 attention Tina Sunier. Information sent must include:
 - ✓ Name, Pro-number, Social Security Number, Birthdate, Address
 - ✓ Name of instructor, Date and site of Certification along with the Course code
 - ✓ Indication of retest or new test
 - ✓ If it is a retest past 30days of expiration or New Certification you must pay \$50 so please include method of payment
 - ✓ If faxed TYPE OF CREDIT CARD, CARD NUMBER, EXPIRATION DATE & NAME ON CARD
-

Special Olympics

There are a few clubs in this state that have programs either in house or teach gymnastics through special agencies. If you are interested in possibility starting a program that works with these very special people, please call one of the clubs below and I am sure they would be happy to help you. You could also call the Illinois Special Olympics in Bloomington. Regional Meets are announced per Special Regions and the State meet is held the 3rd Friday and Saturday of June at Illinois State University

- Aerial Gymnastics (Downers Grove)
- Chicago Park District
- EGGS
- GymNasti
- Gymnastics Spot
- Midwest Academy or Gymnastics
- Palmers Gymnastics & Dance



Petition for Gymnasts Outside the USAG

System

Please follow the procedures listed in the National R&P but include the following people in the sending of

- Supporting Results, and Materials
- Video (should include gymnast performing the routines of the level she is petitioning to.
- Illinois Form (found in this R&P (red))

Please make sure to send to the following

- Regional Technical Chair (If Level is Level 8 or above & gymnast from outside the USA).
- State Chairman
- Illinois Junior Olympic Chair
- And the Appropriate LEVEL Chair (for the Level the gymnast is petitioning into)

Mandate Scores

In the State of Illinois we do not have mandate scores. WE do not require a gymnast to move to another level when she has reached a certain score. **The National Office will not support mandate scores because a gymnast should not compete at a Level THAT SHE IS NOT READY FOR.** We know at times there have been questions regarding the need for Mandate Scores, but **this simply is not an option. Norbert Bendixen**

Region 5

Regional Committee Members

Regional Chairman

Kathy Koeth Shufflin
4002 Jane Avenue
Huron, OH 44839

419-433-7294 Fax & Phone Email PeaceKK@aol.com

Regional Technical Chair

Char Christensen
1260 Churchbell Way
Worthington, OH 43235
USAG -- (614) 841-9170
Work -- (614) 224-9121 ext.294
Fax (614) – 224-2522

Email charchristensen@hotmail.com

Regional TOPS Chairman

Patrick Jordan
500 Conover Drive
Franklin, OH 45005
Work -- (513) 746-2213
Fax 513-746-6443

E-Mail GTCOPCJ@AOL.com

Illinois State Chairman

Norbert Bendixen
200 South Shaddle Ave.
Mundelein, IL 60060
Work -- (847) 949-8743
Fax -- (847) 949-6241

NorbertIL@aol.com

Michigan State Chairman

Augusta Lipsey
3705 Miller Rd.
Kalamazoo, MI 49001
USAG/Fax -- (616) 345-2456
Email j2caugusta@aol.com

Regional Elite Chair

Mary Lee Tracy
3635 Woodbridge Blvd.
Fairfield, OH 45014
(513) 860-3082 Fax 870-3831
e-mail USAMLT@aol.com

Region 5 Camp Director

Dan Miller
Aerial Gymnastics Arena-Tri County
2701 Black Rd. Suite 203
Joliet IL 60435
815-730-7453
Fax 815-729-9830
Email aerial@famvid.com

Indiana State Chairman

Ed Gibson
1579 E. 91st Dr.
Merrillville, IN 46410
USAG/fax -- (219) 736-0667
E-Mail Freded8@aol.com

Ohio State Chairman

Bobbi Montanari Fahrnbach
2881 Scioto Darby Executive Court.
Hillard, OH 43026
USAG/FAX -- (614) 777-9450
Ohio.USAG@aol.com

Regional Junior Olym. Chair

John Geddert
9410 Davis Hwy.
Diamondale MI 48821
Work (517) 322-0360
Fax (517) 322-0436

USATwistars@aol.com

Kentucky State Chairman

Tina Salameh
13100 Magisterial Dr.
Louisville, KY 40223
USAG 502-253-1234
FAX 502-254-1632

Tsalameh@couriernet.infi.net

Region 5 Technical Committee

Women's Regional Technical Chairman (RTC)

Char Christensen

1260 Churchbell Way
Worthington, OH 43235
Home -- (614) 841-9170
Fax 614-841-9188

Email chchristensen@hotmail.com

Carolyn Bowers

235 Willowood Circle
Bowling Green, OH 43402
(419) 352-6179

Sandy Oldham

1230 South Wellington
Buffalo Grove IL 60089
Email sewoldh@AOL.com

Judy Dobransky

3446 Gordon Avenue
Sterling Heights, MI 48310
(810) 264-2047

Email ddobransky@aol.com

Carole Leidtke

3100 Elder Park Road
LaGrange, KY 40031
(502) 241-1444

Email carolereg5@aol.com

Hilary Carlson

328 Briarwood Ln.
Bloomington, IL 60108
(630) 351-9704

Fax same #

Email hcarlson32@aol.com

Coordinator of New Element Evaluations: Char Christensen

Instructions: For any element not included in the USAG Element Supplement or the current FIG Code of Points, use the regional form published in state and regional newsletters, follow all instructions, and mail to Char.

Evaluation Committee -- Sandy Oldham, Judy Dobransky, Carolyn Bowers, Carole Leidtke,

Illinois and Injury Petitions for all Regional Championships: Hilary Carlson

Instructions for Petitions to Regional: Follow all instructions in the National R & P and State R & P and use the Injury Petition Form from the State R & P Appendix. Mail as instructed in the State R&P under Regional Petition. May wish to call Hilary Carlson to indicate that the petition is coming. **Reminder: 3 days past the state meet (next day).**

All remaining inquiries including gymnast drop-backs, technical questions, problems, and proposals should be sent to **Char Christensen**.

Jr. Olympic mobility questions should be sent to the Jr. Olympic Chairman, **John Geddert**

Regional Training Camps

The regional training camps are directed by the Regional Junior Olympic Chair, John Geddert (517-485-4852) & Dan Miller the Regional Training Camp Chairman. Those interested in being a Clinician please contact John.

Training camp entry forms are found On Line www.Region5.com . All Entry info & correspondence goes to Dan Miller

Dates subject to change upon availability of gym sites. See calendar for more specific dates.

Super Camps: 1st weekend in August

Hot Shot (12 & under): 2nd weekend in October

High Tech 9, 10, Elite: 1st weekend in September

Forward Progress: 1st weekend in November

Procedures for Element Evaluations for Region 5

Only the submitted new elements that are performed successfully at the Junior Olympic National Championships will be evaluated by the National Technical Committee and be added to the USAG Element Supplement.

All new elements submitted to the regions will be evaluated and that value will be accepted through that season's National Championships.

Region 5 will maintain an element list for the region that will be published in state and/or regional newsletters. Skills need to be submitted each year.

New elements should be submitted to Char Christensen RTC. Use form in Rules and Policies, include all information, illustration, zip code, telephone number.

Send six copies and please use correct postage.

RTC (Char) will send to the Region 5 Technical Committee , and a copy will be returned to the coach by Char. Please allow a minimum of three weeks from time RTC receives papers for turn-around back to you.

VIDEO TAPES - If you have a video-tape which would demonstrate the element, please include (NON-RETURNABLE) copy to RTC along with form, illustration and description (must be included for use on your returned evaluation during the competitive season).

Region 5 U.S.A.G. Value Part Evaluation Form (J.O. and Elite)

REGION 5 COMMITTEE Char Christensen, RTC
Carolyn Bowers, Carole Leidtke, Judy Dobransky, Sandy Oldham,

This form (6 copies) plus a self-addressed, stamped envelope must be submitted to Char Christensen 1260 Churchbell way Columbus OH 43235 in order to officially request evaluation of elements not listed in the FIG Code of Points or the USAG Supplement. You will receive a temporary RTC (and Region 5 Committee) evaluation for the element you submit, which will be valid for one competitive year up to and including National Championships. Region 5 will up-date and publish a valid list that will be dated. During competition, should there be a different evaluation of the same element on forms from different RTCs, the chief judge should use the higher value for that competition and send notification to each of the RTCs.

A video tape (non-returnable) may be sent along with the forms. There should still be a stick figure drawing on the form for judges' use at competitions.

When this form is returned to you with an element evaluated and the proper RTC verification signature, you as coach, are required to carry the form with you to all competitions and present it to the Meet Referee prior to the Judge's Meeting that precedes the competition.

NO OTHER FORM OR VERIFICATION WILL BE ACCEPTABLE.

Coach's Name _____ Club or College _____
City _____ Address _____
EVENT _____ City/State _____ Zip _____
Element Name _____ Phone _____

Element Description (please describe and *draw* the element)

RATING OF ELEMENT E D C B A No value

USAG Women's Technical Committee Verification Signature
Region _____

Date _____

NOTE TO RTC: Please return one copy of this form to the coach; keep one copy for your files.

NOTE TO MEET REFEREE OF J.O. NATIONALS:

Copy and forward all submitted elements to the National Technical Chairman for evaluation at the next WTC meeting.

2001-02
All Forms must be computer filled
out or Type written

Procedures for Injury / Illness Petitions for REGIONAL J.O. Competitions

Petitions must be submitted on the completed Region 5 Injury Petition Form including all required information. **This packet must include, doctor's note (with release date), one qualifying meet score (signed by judges), and the Region V entry form.** The following people must receive a copy of this packet:

Regional Technical Committee Assistant

Hilary Carlson
328 Briarwood Ln.
Bloomington, IL 60108
(630) 351-9704
Email hcarlson@aol.com

ILLINOIS STATE CHAIRMAN

Norbert Bendixen
200 South Shaddle Avenue
Mundelein, IL 60060
FAX (847) 949-6241
Email NorbertIL@AOL.com

ILLINOIS J.O. CHAIRMAN

Ron Nasti
517 E. Geneva
Carol Stream, IL 60188
630-681-8400
Fax 681-8440
Email gymnasti@prodigy.net

LEVEL CHAIR

Level 5	Level 6	Level 7
Jay Murphy 752 W. Riverside Blvd. Rockford, IL 61103	Wendy McGrath 30W315 Calumet Ave. Warrenville, IL 60555	Cyndi Zimmerman 1167 Milburn CT. Naperville IL 60540
Level 8	Level 9	Level 10
Mary Joe Roehrig 694 Deer Ln. Sleepy Hollow, IL 60118	Suzie Kinsman 218 Madison Oak Park, IL 60302	Dianne Durham 4430 N. Western Ave. Chicago, IL 60625

Region 5 Injury Petition

Deadline – Must be Received (In Hand) by Appropriate Persons 3 Days Following The Last Qualifying Meet

Meet Petitioning To: _____

Gymnast's Name: _____ USAG No. _____ Birthdate: _____ Age Div.: _____

Coach's Name: _____ Phone No. _____

Gym Name: _____ Phone: _____

Address: _____

I. Photocopy of One Sanctioned Meet:

Meet _____

Date _____

- Vault _____

Bars _____

Beam _____

Floor _____

AA _____

Scores from the Sanctioned Meet (must be 1 full point above Qualifying score)

II. Injury Petition must include Physician's written verification or illness or injury **and date of release for return to activity**

REGIONAL TECHNICAL COMMITTEE ASSISTANT

Hilary Carlson
328 Briarwood Ln.
Bloomington, IL 60108
(630) 351-9704

ILLINOIS STATE CHAIRMAN

Norbert Bendixen
200 South Shaddle Avenue
Mundelein, IL 60060
FAX (847) 949-6241
Email NorbertIL@AOL.com

JUNIOR OLYMPIC CHAIRMAN

Ron Nasti
517 E. Geneva
Carol Stream, IL 60188
630-681-8400
Fax 681-8440
Email gymnasti@prodigy.net
Appropriate LEVEL CHAIR

2001-02

All Forms must be computer filled out or Type written. For your convenience forms found on web www.region5.com/illinois

Illinois Competition Information

Entry Requirements

Gymnasts that enter a **Sectional Meet** have determined their LEVEL for that Competitive year and may not drop back. Or Compete at the next level unless they re-qualify for that next level.

Out of State Scores

If scores are coming from out of state meets, make sure that you have a copy of the Sanction Report Form & Official USAG Score Sheet signed by the judge.

Send to the appropriate person in each of the following categories:

Illinois Level Chair

Level 5	Level 6	Level 7
Jay Murphy 752 W. Riverside Blvd. Rockford, IL 61103	Wendy McGrath 30W315 Calument Ave. Warrenville, IL 60555	Cyndi Zimmerman 1167 Milburn CT. Naperville IL 60540
Level 8	Level 9	Level 10
Mary Joe Roehrig 694 Deer Ln. Sleepy Hollow, IL 60118	Suzie Kinsman 218 Madison Oak Park, IL 60302	Dianne Durham 4430 N. Western Ave. Chicago, IL 60625

Computer Entry

Tom Klemens
859 E. Anderson Dr.
Palatine, IL 60067

State Chairman

Norbert Bendixen
200 S. Shaddle Avenue
Mundelein, IL 60060

Illinois Elite Chairman

Todd Gardiner
145 Plaza Drive
Westmont, IL 60559

2001-02 Illinois Competitive Information Summary

Latest Update Sunday, February 10, 2002

State Supported Invite	Entry Fee \$30 on or before Feb 19 th or \$50 after. Entry Deadline same as Level 6 State There is no Qualifying Score for this Level					Level 4
Sectional						Level 5
Qualifying score						30
Last Date to Qualify						February 10th
Entry Fee IN HAND Deadline (FAX, Email, Next Day, Financially responsible for those Gymnasts on Entry)						February 12th
Entry Fee discount if received in hand by deadline						\$50 Discount \$30
Meet Date						February 23,24th
Meet Host						NE: Oaklawn NW: AmerInst S: Quincy
State	Level 10	Level 9	Level 8	Level 7	Level 6	Level 5
Qualifying Score	32	32	33	34.5	33 once	33
Last Qualifying Date	March 10th	March 3rd		March 10th	February 17th	Bring Check to Sectionals & BE PREPARED TO Enter all that Qualified
Entry Fee IN HAND Deadline (FAX, Email, Next Day, Financially responsible for those Gymnasts on Entry)	March 12th	March 5th		March 12th	February 19th	
Entry Fee discount if received by In hand deadline	\$75 Discount \$55	\$75 Discount \$55		\$75 Discount \$55	\$55 Discount \$35	
Meet Date	March 23,24th	March 16,17th		Mar 23,24th	March 3, 4th	March 9, 10th
Meet Host	EnerGym @NIU	Naperville Gymnastics @ Naperville North		EnerGym @NIU	Amer Acad @Stevenson HS	GymNasti @ Wheaton HS
Regional	Level 10	Level 9	Level 8			
Qualifying Score	34	34	Format change please see newsletter			
Entry Fee	\$ 75 4 Judge panel	\$ 65 4 Judge panel	\$ 60 4 Judge Panel			
Meet Date	April 13,14th	April 6, 7th	May 10 – 12th			
Meet Host	Twistars (Lancing MI)		Gym World (Cleveland OH)			
National	Level 10	Level 9				
Meet Date and Host	May/3,4,5th	April 27,28th				

* **(Changes for this season are in bold)**
 * **Once In state series Bring a Check (all Gymnast & Coaches Info) and be prepared to enter athletes to next meet**

i.e. Sectionals to State: State to Regionals: Regionals to Nationals

Illinois Injury Petition Procedure

Petitions must be submitted on the completed State Injury Petition Form including all required information. **This packet must include: the State entry form doctor's note, and 1 qualifying meet score (signed by judges) stapled together in this order.**

Please check the National R&P for further instructions. The following instructions are in addition to those listed in the National R&P

The following people must receive a copy of this packet:

Region 5 Regional	State Championships	Sectional Meets
--------------------------	----------------------------	------------------------

See USAG R & P State Chair Illinois JO Chair Level Chair	USAG R & P State Chair Illinois JO Chair Level Chair	USAG R & P State Chair Illinois JO Chair Level Chair
---	---	---

STATE CHAIRMAN

Norbert Bendixen
200 S. Shaddle Avenue
Mundelein, IL 60060

ILLINOIS JO CHAIRMAN

Ron Nasti
517 E. Geneva
Carol Stream, IL 60188

LEVEL CHAIRPERSONS

Level 5	Level 6	Level 7
Jay Murphy 752 W. Riverside Blvd. Rockford, IL 61103	Wendy McGrath 30W315 Calumet Ave. Warrenville, IL 60555	Cyndi Zimmerman 1167 Milburn CT. Naperville IL 60540
Level 8	Level 9	Level 10
Mary Joe Roehrig 694 Deer Ln. Sleepy Hollow, IL 60118	Suzie Kinsman 218 Madison Oak Park, IL 60302	Dianne Durham 4430 N. Western Ave. Chicago, IL 60625

- **Illinois Petition Form**
 - **One meet score sheet**
 - **Doctor's note with release date***
- * This is in addition to USAG injury petition procedure.**

Coaches must:

- 1) Follow all Petition Procedures
 - 2) Include all required information
 - 3) Meet the Deadline for mailing the petition
-

Illinois Injury Petition

Deadline - 3 Days Following The Last Qualifying Meet (In Hand FAX or NEXT DAY)

Meet Petitioning To: _____

Gymnast's Name: _____

USAG No. _____ Birthdate: _____ Age Division: _____

Coach's Name: _____ Phone No. _____

Gym Name: _____

Address: _____

Phone: _____

I. Photocopy of One Sanctioned Meet:

Meet _____

Date _____

_____	Vault	_____
_____	Bars	_____
_____	Beam	_____
_____	Floor	_____
_____	AA	_____

Scores from the Meet must be

State: Equal or Higher than the Qualifying Score

II. Injury Petition must include Physician's written verification or illness or injury and date of release for return to activity:

2001-02

All Forms must be computer filled out or Type written

Illinois USA Gymnastics Meet Site Evaluation Form

(Please use Only for Positive & Constructive Improvement of any Illinois gymnastics meet)

Meet Location: _____ Type & Level: _____

Meet Date (s): _____ Meet Director: _____

Rate each Category from 1 to 10. One (1) is poor. Ten (10) is excellent.

<u>Category</u>	<u>Rating</u>	<u>Comments:</u>
Pre-Meet Information	_____	_____
Equipment / Matting	_____	_____
Scheduling	_____	_____
Parking	_____	_____
Competition Area	_____	_____
Seating	_____	_____
Concession	_____	_____
Restroom Facilities	_____	_____
Awards	_____	_____
Support Staff (Tabulators timers, Runners, Etc.)	_____	_____

Additional Comments _____

Signature _____ Coach _____ Judge _____

Club Affiliation _____ Phone _____

Please Return this form to the State Chairman

Norbert Bendixen
200 S. Shaddle Ave.
Mundelein IL 60060
Fax 847 - 949 - 6241
Email NorbertIL@AOL.com

Thank You!!

2001-02
All Forms must be computer filled
out or Type written

Illinois Meet Director Information

Meet Bid Form

Please refer to Meet Scheduling Procedure.

Recommendations for Meet Directors

from Carolyn Bowers, former Region 5 RTC, Brevet Judge

Every competition can be better. How? There are a few basic things that are perhaps being viewed as unimportant and they can do wonders for efficiency and to try to have the best, most consistent scores possible.

Meet Director: (any size meet, any level)

1. Schedule coaches meeting.
Inform the meet referee of time and location for coaches meeting, if she is with judges, inform her that you will be starting. If there is a separate warm-up gym and next group coaches meeting is during competition, still have meet referee attend.
2. Introduce meet referee to coaches during coaches meeting (even if judging-acting meet referee).
3. Be sure to have equipment measurement settings for your apparatus for Rules and Policies requirements. Meet referee should have measured and double-checked your settings information. The meet referee can announce which settings meet specs. and which settings are legal for age group difference, although this is printed in the National R&P and coaches are responsible for this.
4. Explain scoring system.
Please note: if each team has separate cards for each gymnast, it is more efficient to have the coach hand all of teams' cards to judge in order. From the judges' perspective, it is often disruptive to be calculating a score and waiting to be handed a card. Often the gymnast must be acknowledged and a train of thought must be started all over again. Also the gymnast may feel ignored, and sometimes errors can be made in haste to get all information in. Is there a written line up? Does it include both number and name? Make sure the gymnasts listen for their numbers and/or name and only begin if the chief judge calls out the correct number/name. The head judge may prefer for each gymnast to Check-in for the correct number and order of the gymnast. The coach should listen to the head judges directions for the event as the gymnasts check-in or ask the head judge which method is preferred.
6. Timers should be capable adults or older capable gymnasts. Timers should be introduced to chief judges for instructions and checking of procedures before the march-in. Timers must be able to remain in place for an entire session, if not for entire meet. If the timers must be changed for ensuing session, then the new timers must again be introduced to the chief judge before march-in for procedure instructions/check. (Never should the CJ be raising her flag/hand to signal a gymnast and have a little voice say, "I start the watch when???"

Yes, there should be a separate timer for bars and beam falls.

Compulsory Timers needed

1. Balance Beam Routine
2. Balance Beam Falls
3. Uneven Bar Falls
- 4.

Optional Timers Needed

- Balance Beam Routine
 - Balance Beam Falls
 - Uneven Bar Fall
 - Floor Exercise Timer
-

Meet Director's Reporting Procedure

2001-02 All Forms must be computer filled out or Type written

To report scores, use the score sheet provided in the back of the National Rules & Policies Book or use a computer printout.

It is required that you include on the official score sheet each gymnast's level, age group, USA gymnastics number, and the Illinois club code. The official codes for each Illinois club are found in the Illinois Club Directory in "Chapter 1 - State of Illinois."

The codes listed with the Illinois Club Directory in "Chapter 1 - State of Illinois" should be used by meet directors on the official score sheets to identify each participating Illinois club. If clubs from outside Illinois are participating in your meet, the club's **name and state** should appear on the official score sheet.

- 1) To Clubs Participating in your meet
 - a) A copy of official score sheets or computer print out
 - b) A copy of the Sanction Report Form including Coaches Sign-in sheet
- 2) Computer Entry Person
 - a) Photocopy (not carbon copy) of score sheets signed by all judges
 - b) Copy of sanction report form
- 3) To Level Chairman
 - a) Original score sheets signed by all judges
 - b) Copy of sanction report form
- 4) To State Chairman
 - a) Copy of Sanction Report Form (blue) including Coaches Sign-in sheet
- 5) To Regional Chairman
 - a) Copy of Sanction Report Form (yellow) including Coaches Sign-in sheet
 - b) Region competition fee Include a check for \$1.00 per competing athlete made out to Region V WPC along with date of meet.
 - c) (no need to send score sheets)

Region 5 Chairman
Kathy Koeth Shufflin
4002 Jane Ave.
Huron OH 44839

Tom Klemens
859 E. Anderson Dr.
Palatine, IL 60067

6

To National Office

- a. Original Sanction Report Form including Coaches Sign-in sheet
USAG Pan Am Plaza 201 S. Capitol Suite 300 Indianapolis, IN 46255 (800) 345-4719

Easy to Use Chart:

Level 5	Level 6	Level 7
Jay Murphy 752 W. Riverside Blvd. Rockford, IL 61103	Wendy McGrath 30W315 Calument Ave. Warrenville, IL 60555	Cyndi Zimmerman 1167 Milburn CT. Naperville IL 60540
Level 8	Level 9	Level 10
Mary Joe Roehrig 694 Deer Ln. Sleepy Hollow, IL 60118	Suzie Kinsman 218 Madison Oak Park, IL 60302	Dianne Durham 4430 N. Western Ave. Chicago, IL 60625

What?	Who?
Sanction form <i>including Coaches</i> <i>Sign-in sheet</i>	National Office (White) Regional Chair (Yellow) State Chair (Blue) Class Chair (Copy for each level @ meet) Computer Entry (Copy) Clubs at meet (Copy) Coaches sign-in sheet not needed
Copy of score sheets <i>(Please use the Club</i> <i>USAG number for</i> <i>Identification)</i>	State Chair Copy Class Chair (Original for each level at meet) Computer Entry (Copy) Clubs at meet (Copy)
Money	to State Chair \$1.00 / gymnast to Regional Chair \$ 1.00 / gymnast

SCORE SHEETS:

Score sheets are to be in ink or computer printout

New for 2001 – 2002 Please make sure that the Score sheets include the USAG Club number for Club identification on the Score sheets

ANY score sheet changes are to be initialed by the judges

All USAG numbers must appear on the score sheet

All Illinois club codes " "

All age groups " "

Forms and payments must be mailed within 24 hours of event completion

MEET CANCELLATION:

If a meet is canceled, please treat it as a normal meet by sending the sanction form to all people above with "CANCELLED" written across the center. See Easy To Use Chart under Sanction Report Form.

Meet Director Symposium

The Illinois USAG Committee administers this symposium during the State Congress along with the Annual Scheduling Meeting. If these dates present a scheduling problem, special arrangements may be made by contacting the State Chair at (847) 949-USGF. The purpose of this meeting is to communicate with all the meet directors within the state on a yearly basis to go over procedures and discuss problems that arose the previous year.

Illinois State & Sectional Awards

Individual Awards

- ✓ **Individual awards will be handed out to 30% of the gymnasts entered in a particular age group (with cap of 15th place)**
- ✓ The State Committee may subdivide the age groups. Ribbons and medals should be ordered/purchased from the JO Chair. Checks made payable to Illinois WPC.
- ✓ Order forms are available from Illinois's Junior Olympic Chairman
 - ✓ Sectional Medals = USAG Sectional size;
 - ✓ State Medals = USAG State size.
- ✓ Awards for places will not be broken at all. Illinois State Committee feels that a gymnast that earns a first place award should receive that award. (ex. 1st, 1st, 3rd, 3rd, 5th etc.)
- ✓ Sectional Participation Certificates will be provided by the State Committee to all participants at Sectional meets and will be available from your JO Chairman.
- ✓ State Participation Certificate will be provided by the national office, at State meets. These will come from the Level Chair..
- ✓ All Level 5 Sectional gymnasts should be recognized individually. This can be done by calling up every gymnast individually and presenting her with her awards.
- ✓ Please try to make the Sectional/State meet the best experience possible.
- ✓ Please include in your pre-meet mailing a copy of the Sectional/State Form. Be careful & make sure that the form is filled out completely. Please keep an active correspondence with Level Chair on gymnasts received on entries (making sure that they are eligible).
- ✓ **Level 8, 9, 10 State Meet results must be sent in by Next Day Mail to the Regional Chair, Regional Tech, and Regional meet director.**

Team Awards

- Age Group Top 3 Scores per event. All Teams that have 3 gymnast in the age group are eligible for an award
- Combined Age Group Top 5 Scores for Level 4-7 and top 3 Scores for Level 8-10.

All teams that have 5 gymnasts in the meet are eligible for a team award.

Meet Director is responsible for communicating the number of teams eligible to the Level Chair. The Level Chair will then communicate to the JO Chair the number of teams eligible. The JO Chair is then responsible for ordering awards.

Illinois USA Gymnastics State

& Sectional Financial Report

New for 2001-02 Forms must be computer generated or Typewritten (Please fill-out entirely to help future competitions)

INCOME:

Entry fee # _____ x fee _____ = _____

EXPENSES:

Facility rental:

Gym :\$ _____@per hour
(\$15per hr maximum)

Out of House :\$ _____@per hour ...

Custodial fees:

(Out of house only).....

Equipment rental:

(Out of House).....

USA Sanction fee.....

JUDGES:

of judges.....

of sessions.....

Fee.....

Transportation.....

Motel.....

Meals.....

Assigning fee.....

TOTAL _____

AWARDS:

Rosette s(Level 4, 5)

Ribbons.....

Medals.....

TOTAL _____

Printing costs.....

Phone costs.....

IL. WPC Competition fee.....

Region 5 Competition fee.....

Refunds.....

Operating supplies.....

TOTAL EXPENSE _____

NET PROFIT(LOSS)State will refund _____

SPLIT 50% Check Payable ILWPC _____

These funds are used to offset any State Series Competitions that may have lost money

***Please submit receipts for all expenses. Thank you.**

Return to State Chair: Norbert Bendixen and appropriate class;
See II. R & P for addresses

Name of Event _____

Level _____

Season/Year _____

Date _____

Location _____

Meet Director _____

This column is purely for information purposes. Thanks.

INCOME:

Admission # _____@ _____ Total _____
(up to \$2/\$1 in house, \$4/\$2 out of house)

Concessions

T-shirts

Programs

Team entries (check payable :IL. WPC)

Raffles

TOTAL _____

EXPENSES:

Goodie bags

Concessions

Print Programs

T-shirts Raffles

.....

Publicity

Team entries

Sponsor's Contributions

TOTAL EXPENSE _____

NET PROFIT _____

Signature of Meet Director: _____

Address _____

Phone: _____

**DEADLINE 6 WEEKS FOLLOWING
EVENT DATE (\$25 LATE FEE IF LATE TO
ILWPC)**

Judges and Judging

Judge's Requests

1. Complete the Request for Judges form in the USAG R & P (appendix V). Send the form plus a check for \$3 per judge **per DAY** requested to IL-NAWGJ to the appropriate assignor.
North Assignor Sue Brosnan 4556 N. Mobile Chicago IL 60630 773 – 202-8146
South Assignor Mary Kraus 6600 So. 6th St. Rd. #210 Springfield IL 62707 217-523-1223
2. The meet must be sanctioned by the USAG or a certificate of insurance must be on file with the State Judging Director. Priority will be given to sanctioned meets.
3. Cancellations must be made at least 7 days prior to the meet. Late cancellations will result in the meet director paying each contracted official one session fee plus non-refundable expenses. Officials who fail to show up to a meet will be responsible for paying the meet director a one session fee plus non-refundable expenses.
4. Requests must be made at least 30 days in advance. Please continue to follow this schedule as you have in the past. Thank you. Fees for late requests are \$5 per judge.
5. Please submit problems and questions to the appropriate assignor or the State Judging Director, Jean Johnson 5501 Wolf La Grange, IL 60525 (708) 246 – 1643 NAWGJ & Fax Email IL_SJD@aol.com.

Judging Panels

The Level 4's, 5's, and 6's are allowed to use a **one judge** panel but the following policies must be followed to make the scores that gymnasts attain eligible for Sectional & State.

1. **Meet must be advertised in advance that one judge panel will be used.**
2. **All clubs attending must agree.**
3. **The Level chair must be made aware that a 1 judge panel will be used prior to meet.**
4. **IL NAWGJ assigning person must be aware one judge panel will be used on judges request form or via telephone before assignment.**
5. **Level 6 Meet may use 1 Judge panels but only scores from 2 Judge panels can be used to qualify to the Level 6 State meet**
6. *Level 5,6 judge must have at least one year's experience if used as 1 Judge panel*

Sectional, state and regional meets - please refer to the competition charts as to number of judges per panel.

Procedure for Selection of Judges for Nationals, Regional, & State

The ultimate responsibility of selecting judges lies with the USAG Committee (State & Regional); however in Illinois and Region 5, we share the responsibility between the USAG and the NAWGJ Boards. In Illinois during the summer the State Judging Director sends a survey listing **all Level 10 & higher rated** Illinois judges with active status to all Illinois USAG and NAWGJ Board Members. The members are asked to rate each judge on a 1-5 scale or to mark a column indicating they are not familiar with the judge. They are also asked to rank the judges from 1-15 for whom they would recommend to have at Regionals & Nationals. The surveys are anonymous, except for marking if they came from a USAG or an NAWGJ Board member. We separate the tallying of the lists by the USAG committee and NAWGJ Board. The average rating is figured for each judge and a listing is compiled high to low. We add the 2 lists numbers to get a final list.

The State Chair takes the USAG Committee list to the Regional Board Meeting and the State Judging Director sends the NAWGJ Board list to the Regional Judging Director for input at the Regional Board Meeting. The USAG Regional Board decides who will judge the Regional and National Meets depending on ratings, State Recommendations, and the site of the meet.

Our State uses the combined USAG and NAWGJ lists to decide who will judge our State Meets. **A sub-committee that has been appointed will meet to review result according to the above criteria and set State MEET ASSIGNMENTS.** Other criteria that enter into the final decision are the: participation at Training Camps both State and Regional, site of meet, use of judges through out the state, and judges availability.

Sub-Committee in clued

- **USAG State Chairman,**
- **State Junior Olympic Chair,**
- **State NAWGJ Chairman and the**
- **North and South Judges Assignors.**

We use this rather complicated form of evaluation to give the fairest and most impartial form of evaluation. We understand that no system of evaluation is perfect but feel this is the best system so far. If you have any input as to how we could do this better please help us out.

We as the Regional board determine our National and Regional Judges by listing our State Choices in order. We use site of meet, experience, Ratings, Regional Training Camp, Etc. as basis for recommendations to both the National And Regional Meets

Region 5 State web sites

Indiana Club Directory See Web Page www.Region5.com/indiana

Kentucky Club Directory See Web Page www.clubs.org/WKY

Michigan Club Directory See Web Page www.clubs.org/WMI

Ohio Club Directory See Web page www.region5.com/ohio

States near Illinois web sites

Wisconsin See Web site www.clubs.usag.org/WWI

Iowa See Web site www.clubs.usag.org/WIA

Missouri See Web site www.clubs.usag.org/WMO

Illinois Meet Calendar: 2001-2002

September 2001

Date	Club	Level	Name of Meet	Site
9/29/01	NAWGJ	4,5,6,7,8	South Judges Cup	Midstate
9/30/01	NAWGJ	4,5,6,7,8	South Judges Cup	Midstate

October 20

Date	Club	Level	Name of Meet	Site
10/14/01	Tri-Star	5,6,7,8,9	Fall Fiesta	In Gym
10/14/01	River City	5,7,8,9,10	Jumpin Jacck-o-Lantern	In Gym
10/20/01	Ultimate	4,5,6	Ultimate Halloween Meet	In Gym
10/21/01	Ultimate	4,5,6,7,8,9,10	Ultimate Halloween Meet	In Gym
10/27/01	Midstate	4,5,6,7,8,9,10	Monster Mash	In Gym
10/28/01	Olympia Gymnastics	4,5,6,7,8	O.G.C. Invite	In Gym
10/28/01	Midstate	4,5,6,7,8,9,10	Monster Mash	In Gym

November 2001

Date	Club	Level	Name of Meet	Site
11/4/01	Tumbling ON USA	4,5,6,7,8,9	Turkey Tumble	In Gym
11/4/01	Southern Il Gymn Acad	4,5,6,7,8,9,10,op	Saluki Invitational	SIU
11/4/01	EGGS	5,6,7,8,9,10	Turkey Invite	In Gym
11/4/01	St. Charles	5,6,7,8,9,10	Fall Flip	In Gym
11/9/01	NAWGJ	4,5,6,7,8,9,10	North Judges Cup	Aerial Arena
11/10/01	NAWGJ	4,5,6,7,8,9,10	North Judges Cup	Aerial Arena
11/11/01	Champaign County Y	4,5,6,7,8,9,10	Turkey Trot	In Gym
11/11/01	NAWGJ	4,5,6,7,8,9,10	North Judges Cup	TBA
11/17/01	Gymnast Central	4,5,6,7,8	TBA	In Gym
11/17/01	Gymnastics Etc.	4,5,6,7,8,9,10	Horton Invitational	ISU
11/18/01	Golden's	4,5,6,7,8	Thinking Of Others	In Gym
11/18/01	Gymnastics Etc.	4,5,6,7,8,9,10	Horton Invitational	ISU
11/18/01	Aerial Gym	5,6	TBA	Aerial Arena
11/18/01	EnerGym	5,6,7	EnerGym	In Gym
11/24/01	Itasca Gymnsatics Cen	4,5,6,7,8,9	Invite	In Gym
11/24/01	Crystal Lake Gymn	5,6,7	Candy Land	In Gym
11/25/01	Causa's	4,5,6,7,8	Qualifier	In Gym
11/25/01	Crystal Lake Gymn	5,6,7	Candy Land	In Gym
11/30/01	Gymkinetics	7,8	Team Challenge	Aerial Arena

December 2001

Date	Club	Level	Name of Meet	Site
12/1/01	Champaign County Y	4,5,6,7,8,9,10	Illinois Invitational	U of I
12/1/01	American Institute	5,6,7,8,9,10	Stars & Strips	In Gym
12/1/01	Gymkinetics	6,7,8	Team Challenge	Aerial Arena
12/2/01	Gymkinetics	4,5	Team Challenge	Aerial Arena
12/2/01	Champaign County Y	4,5,6,7,8,9,10	Illinois Invitational	U of I
12/2/01	Mid Illinois Gymnastics	4,5,6,7,8,9,10	Great River Road Classic	In Gym
12/2/01	Skyline Gymnastics	4,5,6,7,8,9,10	Skyline Invite	UIC
12/2/01	American Institute	5,6,7,8,9,10	Stars & Strips	In Gym
12/2/01	American Eagle	7,8,9	Home	In Gym
12/7/01	Ultimate	4,5,6	Make-a-Wish Benefit Meet	In Gym
12/7/01	Gymkhana	9,10	Santa's Toys For Kids	In Gym
12/8/01	Midwest Academy	4,5,6	Midwest Meet	In Gym
12/8/01	Ultimate	4,5,6	Make-a-Wish Benefit Meet	In Gym
12/8/01	Wilmette	5,6,7,8,9,10	Wilmette	New Trier HS
12/8/01	Gymkhana	7,8	Santa's Toys For Kids	In Gym
12/9/01	Ultimate	4,5,6	Make-a-Wish Benefit Meet	In Gym
12/9/01	Gymkhana	5,6	Santa's Toys For Kids	In Gym
12/9/01	Midwest Academy	7,8,9,10	Midwest Meet	In Gym
12/14/01	EnerGym	4,5,6	St. Nick Invite	Sycemore HS
12/15/01	EnerGym	4,5,6	St. Nick Invite	Sycemore HS
12/15/01	Olympia Gymnastics	4,5,6	O'Tannenbaum	In Gym
12/15/01	USGTC	7,8,9,10	Snowflake Festival	In Gym
12/16/01	Chicago Park Dist	4,5,6	Holiday Classic	UIC or Peterson
12/16/01	USGTC	4,5,6	Snowflake Festival	In Gym
12/16/01	EnerGym	7,8,9,10	St. Nick Invite	Sycemore HS
12/16/01	Olympia Gymnastics	7,8,9,10	O'Tannenbaum	In Gym
12/30/01	Naperville	5,6,7,8,9,10	TBA	In Gym

January 2002

Date	Club	Level	Name of Meet	Site
1/5/02	Aerial Gym	TBD	TBA	In Gym
1/6/02	Golden's	4,5,6,7,8	Happy 2002	In Gym
1/6/02	Gym Acad Rockford	8,9,10	Jingle Bell Rock	In Gym
1/6/02	Aerial Gym	TBD	TBA	Aerial Arena
1/12/02	American Eagle	4,5,6	Home	In Gym
1/12/02	Tumbling ON USA	4,5,6	Erin Olmsted Memorial	In Gym
1/12/02	AllStar Gymnastics	4,5,6,7,8,9,10	Winter Carnival	In Gym
1/12/02	Midstate	4,5,6,7,8,9,10	Winter Invite	In Gym
1/13/02	AllStar Gymnastics	4,5,6	Quick Meet	In Gym
1/13/02	Midstate	4,5,6,7,8,9,10	Winter Invite	In Gym
1/13/02	Tumbling ON USA	4,5,6,7,8,9,10	Erin Olmsted Memorial	In Gym
1/13/02	Oak Lawn	5,6,7,8,9	Winter Blast	In Gym
1/13/02	American Eagle	7,8,9	Home	In Gym
1/18/02	Aerial Arena	5	Week Before Super Bowl	In Gym
1/19/02	St. Jude	4,5,6,7,8,9,10	St. Jude Benefit Meet	Peoria Civic
1/19/02	Aerial Arena	5,6,7	Week Before Super Bowl	In Gym
1/19/02	Naperville	5,6,7,8,9,10	Martin Luther King Invite	In Gym
1/20/02	St. Jude	4,5,6,7,8,9,10	St. Jude Benefit Meet	Peoria Civic
1/20/02	Naperville	5,6,7,8,9,10	Martin Luther King Invite	In Gym
1/20/02	Aerial Arena	8,9,10	Week Before Super Bowl	In Gym
1/25/02	Beverly	7,8,9,10	TBA	In Gym
1/26/02	Gymnast Central	4,5,6,7,8	Monkeying Around Gym	In Gym
1/26/02	Wilmette	5,6,7,8,9,10	Wilmette	New Trier HS
1/26/02	Crystal Lake Gymn	6,7	Aloha	In Gym
1/27/02	Crystal Lake Gymn	5	Aloha	In Gym
1/27/02	Beverly	4,5,6	TBA	In Gym
1/27/02	Itasca Gymnsatics Cen	4,5,6,7,8,9	Invite	In Gym
1/27/02	Champaign County Y	4,5,6,7,8,9,10	Heart of Gold	In Gym
1/27/02	Chicago Park Dist	4,5,6,7,8,9,10	Snowflake Open	UIC or Peterson
1/27/02	Oswego PD	4,5,6,7,8	Oswego Invite	Oswego HS

February 2002

Date	Club	Level	Name of Meet	Site
2/1/02	Gymnastics Spot	TBA	St. Valentines Day Classic	Vernon Hills HS
2/1/02	Gymnastics Spot	TBA	St. Valentines Day Classic	Vernon Hills HS
2/2/02	Gymnastics Spot	4,5,6	St. Valentines Day Classic	Vernon Hills HS
2/2/02	World Class	4,5,6,7,8,9,10,E	Gateway Challenge	Collinsville Civic
2/2/02	Wilmette	5,6,7,8,9,10	Wilmette	New Trier HS
2/2/02	Gymnastics Spot	7,8,9,10	St. Valentines Day Classic	Vernon Hills HS
2/3/02	Gymnastics Spot	4,5,6	St. Valentines Day Classic	Vernon Hills HS
2/3/02	World Class	4,5,6,7,8,9,10, E	Gateway Challenge	Collinsville Civic
2/3/02	Gymnastics Spot	7,8,9,10	St. Valentines Day Classic	Vernon Hills HS
2/8/02	IGI	4,5,6,7,8,9,10	Chicago Style	Navy Pier
2/9/02	Causa's	4,5,6,7	Qualifier	In Gym
2/9/02	IGI	4,5,6,7,8,9,10	Chicago Style	Navy Pier
2/9/02	Palatine Gym Club	6,7,8	Matras Invite	Park Dist Gym
2/10/02	Palatine Gym Club	5	Matras Invite	Park Dist Gym
2/10/02	Mattoon Gymnastics	4,5,6,7,8	Sweatheart Meet	In Gym
2/10/02	IGI	4,5,6,7,8,9,10	Chicago Style	Navy Pier
2/10/02	x	5	Level 5 Sectional Last Qualifying Date	TBA
2/16/02	Chicago Park Dist	4,5,6,7,8,9,10	Sweetheart Classic	UIC or Peterson
2/16/02	Dynamite	4,5,6,7,8,9,10	Go For It	In Gym
2/16/02	St. Charles	5,6,7,8,9,10	President's Day Invite	In Gym
2/16/02	Gym Corner	7,8,9,10	Gym Corner Invite	In Gym
2/17/02	x	4 & 6	level 4 & 6 Last Qualifying Date	
2/17/02	Gym Corner	4,5,6	Gym Corner Invite	In Gym
2/17/02	Dynamite	4,5,6,7,8,9,10	Go For It	In Gym
2/17/02	Olympia Gymnastics	4,5,6,7,8,9,10	Booster Invite	In Gym

2/17/02	St. Charles	5,6,7,8,9,10	President's Day Invite	In Gym
2/22/02	Itasca Gymnsatics Cen	7,8,9,10	Invite	In Gym
2/23/02	TBD	5	Level 5 Sectionals	TBA
2/23/02	Quincy Gymnastics	5,6	March of Dimes Invite	Quincy HS
2/23/02	Crystal Lake Gymn	7,8,9,10	Mardi Gra	In Gym
2/24/02	Quincy Gymnastics	4,7,8,9,10	March of Dimes Invite	Quincy HS
2/24/02	TBD	5	Level 5 Sectionals	TBA
2/24/02	Crystal Lake Gymn	5,6	Mardi Gra	In Gym

March 2002

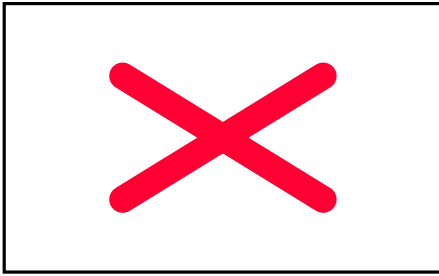
Date	Club	Level	Name of Meet	Site
3/2/02	American Acedemy	4,5,6,7,8,9,10	March Madness	Stevenson HS
3/2/02	Midwest Academy	4,5,6,7,8,9,10,op	Bravo Classic	St. Benidictine
3/3/02	TBD	4, 6	Level 4 Invite Level 6 State	x
3/3/02	Causa's	4,5,6,7,8,9	Qualifier	In Gym
3/3/02	American Acedemy	4,5,6,7,8,9,10	March Madness	Stevenson HS
3/3/02	EGGS	4,5,6,7,8,9,10	EGGS Invite	In Gym
3/3/02	Midwest Academy	4,5,6,7,8,9,10,op	Bravo Classic	St. Benidictine
3/3/02	x	8,9	Level 8,9, Last Qualifying Date	x
3/8/02	Aerial Gym	TBD	Midwest Open	Aerial Arena
3/9/02	TBD	5	Level 5 State Championships	x
3/9/02	Wilmette	5,6,7,8,9,10	Meet	New Trier HS
3/9/02	x	7,10	Level 7,10 Last Qualifying Date	x
3/9/02	Aerial Gym	TBD	Midwest Open	Aerial Arena
3/10/02	TBD	5	Level 5 State Championships	x
3/10/02	Aerial Gym	TBD	Midwest Open	Aerial Arena
3/16/02	Springfield Y	4,5,6,7,8	Leprechaun Leap Meet	In Gym
3/16/02	TBD	8,9	Level 8,9 State Championships	x
3/17/02	TBD	8,9	Level 8,9 State Championships	x
3/23/02	TBD	7, 10	Level 7, 10 State Championships	x
3/24/02	TBD	7,10	Level 7, 10 State Championships	x

April 2002

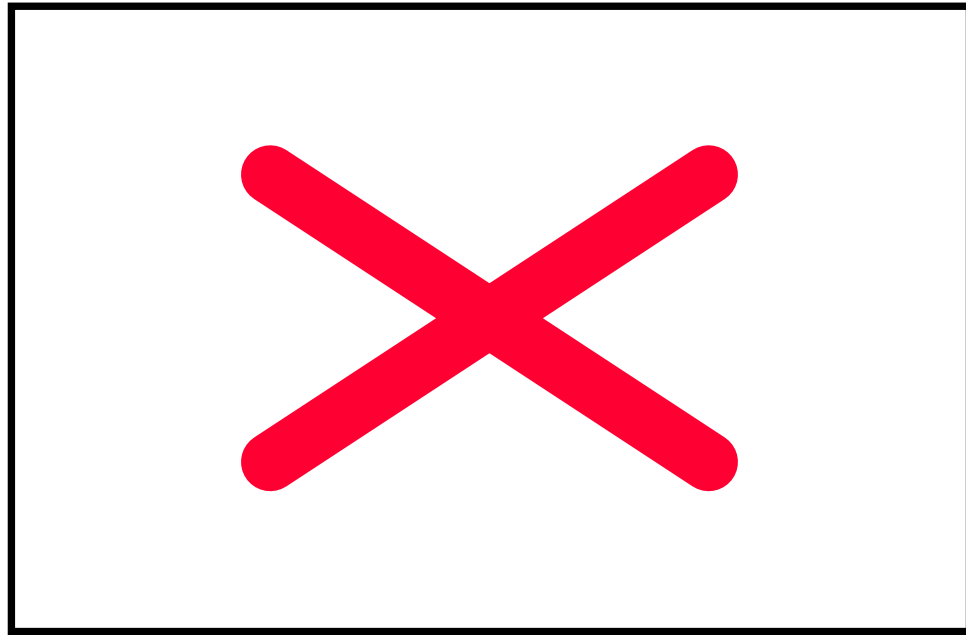
Date	Club	Level	Name of Meet	Site
4/7/02	Causa's	4,5,6,7,8,9	Qualifier	In Gym
4/7/02	TBD	9	Level 9 Regional Championships	x
4/13/02	TBD	10	Level 10 Regional Championships	x
4/14/02	TBD	10	Level 10 Regional Championships	x
4/20/02	Midstate	4,5,6,7,8,9,10	Lincolnland Classic	In Gym
4/21/02	Midstate	4,5,6,7,8,9,10	Lincolnland Classic	In Gym
4/27/02	TBD	9	Level 9 Eastern Championships	x
4/28/02	TBD	9	Level 9 Eastern Championships	x

May 2002

Date	Club	Level	Name of Meet	Site
5/5/02	TBD	8	Level 8 Regional Championships	
5/9/02	TBD	10	JO Nationals	x
5/10/02	TBD	10	JO Nationals	
5/11/02	TBD	10	JO Nationals	
5/12/02	TBD	10	JO Nationals	



USA Gymnastics Illinois State Committee



2000 – 2001 Edition

A General Guide to Competition (Parents)

Table of Contents

This booklet is a general guide for parents and gymnasts who are entering the USA Gymnastics Junior Olympic Program. The information contained here is meant help make your competitive experience a positive and rewarding one.

Meet Etiquette for Gymnasts and Family

- Before the Day of the Meet
- Competitive Dress Code
- Stretch and Warm-up Sessions
- Opening Ceremonies and Competitions
- Competing is a Privilege
- Receiving Awards in Public

Gymnastics Scoring Guide for Spectators

- A General Explanation

How does the Illinois State Committee Arrive at the State Series Schedule

- National Office Sets National Meets
- Region 5 Committee sets their Schedule accordingly
- State Committee (Board) sets it schedule according to National and Regional

Other Useful Information

- USAG Athlete Membership Number
- Code of Ethics
- Rights and Obligations of Gymnasts
- Explanation of the Junior Olympic Program
- Mobility between Levels
- Competitions

Awards

- Achievement
 - Placement
 - Team Awards
-

So you made the Team

Meet Etiquette for Gymnasts and Family Members

Before the Day of the Meet

Whether your meet is in your own facility or in another team's gym, it is important that you and your athlete remember that hosting a meet takes a great deal of work.

The hosting gym receives a roster of athletes from each gym wishing to participate in the competition. To give everyone an equal opportunity to take part in the meet, a deadline date is usually established. The deadline for entries can be from one week to ten days prior to the event.

When the hosting gym gets all of the rosters, they may then begin to establish sessions and times. This all takes time. Please DO NOT call the hosting gym for information. The proper etiquette is to ask your own coach. It is his/her responsibility to furnish you with this information. Sometimes there are unforeseen problems that might cause a delay in this information being communicated, so be patient.

Each gym club has a set of rules and regulations that have been established for your comfort and safety. ALWAYS follow the hosting gym's rules. Here are a few rules that are common to ALL meets:

**NO FLASH PHOTOGRAPHY
NO PARENTS OR SIBLINGS IN THE COMPETITION AREA
NO FOOD OR DRINKS IN THE GYM PROPER
NO PARENTS ALLOWED TO QUESTION A JUDGE
NO SPECTATORS ALLOWED ON ANY EQUIPMENT
NO PROFANITY
NO UNSPORTSMANLIKE BEHAVIOR
NO DESTRUCTION OF GYM PROPERTY**

Competitive Dress Code

In gymnastics, women wear a long sleeved leotard (sleeveless tanks have been approved for competition, but are slow to catch on), while men wear a sleeveless uni-tard with stirrup pants or shorts. Many training schools have a coordinating warm-up suit as part of their competitive apparel.

Stretch and Warm-Up Session

Stretch and warm-up sessions are usually held 1 - 1 1/2 hours before competition begins. Gymnasts should arrive 15 minutes early to check in, obtain their competition number and become organized. Stretching and warm-up should be done as a Team.

Opening Ceremonies and Competition

At the conclusion of warm-ups, a gymnast should report to his/her coach to prepare for Opening Ceremonies. Gymnasts are usually queued up in ascending height order and March into the gym as a Team.

Once all teams and Officials have been introduced, it is customary to begin the contest with the National Anthem or the Pledge of Allegiance. During this solemn period, please stand at attention and maintain silence, unless singing the anthem or speaking the pledge.

Once the ceremonies are concluded the gymnast will be directed to his/her first event. Most gyms have a designated "waiting area" for the contestants. Report to your coach immediately before and after an event. Many coaches prefer that their athletes wear warm-up suits between events, so listen to your coach.

Competing is a Privilege

You have earned the right to compete in the USA Gymnastics Junior Olympic program, through countless hours of hard work and dedication to the sport. Please remember that competing is a privilege and as such, should not be taken for granted. All gymnasts should conduct themselves with dignity, composure and good sportsmanship.

At each event gymnasts return the Head Judge's salute prior to beginning the exercise. If you should fall from a piece of equipment, you have a certain amount of time to remount the apparatus. Take that time allotted to compose yourself and be sure to salute the Judge again prior to commencing your routine.

At all meets, please keep in mind that you are a guest, whether you are competing at a "home" meet or at an "away" meet. Treat the hosting facility, its equipment and all other gymnasts with respect and courtesy. Support your Teammates by cheering in a courteous manner, and congratulating them. Be friendly and polite to all Judges, Coaches and other gymnasts ***regardless of whose team they are on.***

IT IS SUGGESTED THAT YOU REMAIN IN THE COMPETITIVE AREA UNTIL AFTER THE AWARDS CEREMONY, however each gym has its own rules regarding this issue.

Receiving Awards In Public

Most meets have a formal system for presenting awards. As an athlete, a demonstration of courtesy and gratitude is appropriate. It is customary to accept awards by thanking the presenter with a firm handshake. Congratulate the other athletes receiving awards as well. Stay on the awards podium for a brief time after all gymnasts have received their awards; this will enable parents and relatives to take your photo on the platform.

Under no circumstances should you show disappointment in the awards that you are given.

Gymnastics Scoring Guide for Spectators

The sport of gymnastics combines athletic strength, technical perfection and graceful presentation. There are two categories of competition, Compulsory and Optional.

There are four competitive events in women's gymnastics: Vault, Uneven Bars, Balance Beam and Floor Exercise. The scoring in gymnastics is a negative system, based upon a perfect routine of 10.00 points. Judges make specific

deductions for errors throughout the routine, total the deductions and subtract that amount from 10.00 points to arrive at the score. Deductions are made for falls, bent arms and legs, flexed feet, poor rhythm, improper conduct of a gymnast or coach, for improper dress and for coaches spotting the performer. There are normally two judges per event and each score must be within .specific Ranges of each other; the scores are averaged and that is the final score flashed. **If** the scores are not within .acceptable ranges the judges must confer and adjust each score until they are within the allotted .5 margin and then average the scores.

There are six competitive events in men's gymnastics: Floor, Pommel Horse, Rings, Vault, Parallel Bars and Horizontal Bar. As with girl's gymnastics, there are two categories of competition: Compulsory and Optional. The scoring in gymnastics is a negative system, based upon a perfect routine of 10.00 points. Judges make specific deductions for errors throughout the routine, total the deductions and subtract that amount from 10.00 points to arrive at the score.

Gymnasts who perform in all events receive an All-Around score, which is the total of all events.

.5

How does the Illinois State Committee (Board) Arrive @ State Series Schedule

- National Office Sets National Meets
- Region 5 Committee sets their Schedule accordingly
- State Committee (Board) sets it schedule according to National and Regional

Other Useful Information

Each year, prior to his/her first competition, every competitor in the J. O. Program will need to have a valid registration number. This Team Member number, is assigned by the USA Gymnastics membership office. 100% of all Athletes appearing in a USAG Sanctioned Event must be pre-registered and their number must be for the current year. The Team Member Season begins each August 1 and runs through the following July 31. All Team Member numbers are automatically null and void each July 31, which means you will get a new number each year.

Once you have sent in your Team Membership registration form, along with payment, your gym will receive a computer printout, which will contain your name and number. Once your club has received the printout from the USAG membership department, you will be eligible for competition.

Shortly after registration you will receive a Team Member card from USAG. Please keep this card with you at all meets.

Code of Ethics and Rights & Obligations of Gymnasts

The USA Gymnastics program has a *Code of Ethics* chapter in their Rules and Policies manual. Ask your coach to cover this important chapter with you. They also list the *Rights and Obligations of Gymnasts*, which I have included below:

I. THE GYMNAST HAS THE RIGHT TO:

- A. Compete in the meet if she has met all the requirements for eligibility and is properly entered.**
- B. Enter in the competition by completing the individual gymnast's entry form signed by her parent (if under 21 years of age), which is mailed in by her coach, with the entry fee attached, before the deadline for entries.**
- C. Enter into any of the USA Gymnastics sponsored competitions without being affiliated with any organization or team. However, the gymnast must be accompanied by a Women's USA Gymnastics Professional member acting as coach.**
- D. Use any of the facilities provided by the meet organizing committee.**
- E. Use the services of any person connected officially with the meet (i.e., physician, trainer, music manager, etc.).**
- F. In the case of a tie, expect her award to be mailed to her club address, free of charge, not later than one (1) month after the completion of the meet, if the award is not available at the meet.**
- G. Expect courteous and respectful treatment from all participants and meet personnel.**
- H. Expect that the competition site provides a safe and adequate environment, allowing her to perform at the best of her ability.**

II. THE GYMNAST IS OBLIGATED TO:

- A. Obtain a Team Member number from the USA Gymnastics office and be prepared to show her membership card at any sanctioned event in which she participates.**
 - B. Follow the USA Gymnastics Code of Ethics. (See Section 1, Chapter 2.)**
 - C. Perform in the meet to the best of her ability.**
 - D. Be familiar with the rules of the meet and schedule of the meet events and lineup.**
 - E. Be present at the site of the meet for sufficient warm-up.**
 - F. Remain in the area of competition which is designated for gymnasts as competitors or as observers.**
 - G. Obey warm-up regulations and rotation schedules.**
 - H. Present herself in the proper attire (no bare midriffs, backless leotards, T-shirts or boxer shorts). Leotard and/or warm-up suit should be worn for opening, closing and award ceremonies. Leg opening on competitive leotards must NOT be cut or rolled above the gymnast's hip bone. A deduction will be applied for an infraction. For competition, the gymnast may wear a sleeveless leotard and may be barefooted or wear gymnastics footwear.**
 - I. Be well groomed in her appearance:
 - 1. Clean attire.**
 - 2. Hair secured away from the face.**
 - 3. Free from any object which may hinder or endanger her safety (jewelry, etc.).****
 - J. Accept the received score without criticism or comment.**
 - K. Conform to the regulations of the meet. Upon violating its rules, she may be warned by the Meet Referee once; the second time she shall be told that her right to continue competition is terminated for the remainder of the meet.**
 - L. Be ready to go on from the moment she is in position of "waiting" (two or more gymnasts ahead of her) with her competitor number card available or worn.**
 - M. Remain seated at all times while not performing, with all of her belongings in her competition bag neatly placed out of sight.**
 - N. Eat or drink outside of the competition area.**
 - O. Perform in a most disciplined and elegant manner.**
 - P. Be courteous, respectful and polite to all meet officials, coaches, hostesses, competitors and associated persons.**
 - Q. Exhibit self-control and calmness in the case of a fall or injury.**
 - R. Be aware that infringement of obligations could lead to deduction and/or expulsion by the jury.**
 - S. To flash her vault number, at state level and above optional meets.
To wear her competitive number at National level competitions, or at any other competitions
which supply competitive numbers to be worn on the back.**
-

Junior Olympic Competitive Program

There are 7 competitive levels in the USAG program. They are Levels 4, 5, and 6, which are, Compulsory levels that require all gymnasts to perform the same routine, and are judged according to a norm as well as to each other. Level 7 which is has Elements that must be performed but Choreography of the routines are determined by the Coaches. Levels 8, 9 and 10 are Optional levels, in which gymnasts perform routines based on difficulty, execution and composition.

Each level in the J. O. Program has its own rules regarding age and minimum standards for mobility. In addition to a minimum entry age, there are also various age divisions within a level. For example, you must be 7 years old to compete at Level 5 and the age divisions are 7-8 year olds, 9-11 year olds and 12 and over. These divisions are also referred to as Children, Juniors and Seniors.

Mobility Between Levels

Each level in the J. O. Program has a **minimum standard** for mobility, or movement to the next level. The current requirements are a 31.00 All Around score at Levels 5, 6 and 7 to move to each successive level. To move from Level 8 to Level 9 requires a 32.00 AA and to move from Level 9 to Level 10 a gymnast would need to score a 34.00 AA.

It is important to remember that the scores required to move upward in a level is the **MINIMUM STANDARD** needed for mobility. **It is also important for parents and gymnasts to know that each coach and each club may have their own requirements that EXCEED the minimum standard.**

Achieving the minimum mobility score at one level does not mean that the gymnast will be **capable** of performing routines at the next level.

Competitions:

Every gymnastic club has its own agenda with regards to when, where and how many meets a gymnast will attend. There are however, some common meets that most gyms try to attend and those are the Sectional, State, Regional and National competitions.

Not all levels go to all of the special meets mentioned in the above paragraph. The level that the gymnast is in determines the highest Championship level in which she will compete. The chart below lists the highest Championship meet for each level:

LEVEL	SECTIONAL	STATE	REGIONAL	NATIONAL
4	Determined by State Committee	Determined by State Committee	No	No
5	Yes	Determined by State Committee	No	No
6	Determined by State Committee	Yes	No	No
7	Determined by	Yes	No	No

	State Committee			
8	Determined by State Committee	Yes	Determined by the Regional Committee	No
9	Determined by State Committee	Yes	Yes	No
10	Determined by State Committee	Yes	Yes	Yes

The Following Chart is what the Illinois State & the Region 5 Committee has determined will be in effect in Illinois

Level	Sectional	State	Regional	National
4	NO but state supported Invitational	NO	NO	NO
5	YES	Yes	NO	NO
6	NO	YES	NO	NO
7	NO	YES	NO	NO
8	NO	YES	YES	NO
9	NO	YES	YES	YES Easterns
10	NO	YES	YES	YES

Awards

The minimum numbers and/or type of awards that must be distributed are determined by USA Gymnastics. However, many hosting facilities chose to exceed the minimum numbers/types of awards given at local meets, while many States set their own standards for awards.

Achievement Awards

In Illinois, Level 4 & 5 are currently achievement levels, that is, awards are given based on score rather than placement.

This system was designed to encourage the beginning gymnast by giving her an opportunity to receive recognition based on *her* performance alone. Each color achievement ribbon represents a range of scores:

RibbonColor	Individual Scores	All-Around at Sectionals
Blue Ribbon	9.00	35.00
Red Ribbon	8.00	32.00
White Ribbon	7.50	30.00
Yellow Ribbon	7.00	28.00

Placement Awards

At Level 6 and above, gymnasts are ranked in the order that they finish on each event and in the all-around (the total of all four events). First, second and third place, etc., awards are given out; with the number of places

receiving awards determined by the number of gymnasts entered in a given age group. These type of awards are typically given in the form of ribbons, medals and occasionally as trophies.

Team Awards

The final type of award that may be earned at a competition falls under the category of Team Awards. Team awards can be earned for an AGE GROUP of gymnasts (as covered in the USA Gymnastics Rules & Policies), as well as for Combined Age-Group TEAM. The age group score is usually determined by taking the top 3 scores per event or all-around, per age group, while the Combined Age Group Team score is determined by taking the top 5 (in some cases 6) scores per event or all-around, despite age.

Regardless of the type of awards offered at a competition, it is important to remember that it is not the winning that counts, but the effort and sense of personal accomplishment that an athlete feels when doing her “personal best”.

A Final Note:

Please remember that the PROCESS of learning during competition is much more important than the OUTCOME

This communication is meant as a very general guideline to help you and your child with the most frequently asked questions about competition in the USA Gymnastics Junior Olympic Program. Every gym/coach has rules that are specific to that agency or coach, so please take the time to ask and understand those rules. It is our sincere wish that your competitive experience be a positive and rewarding one.